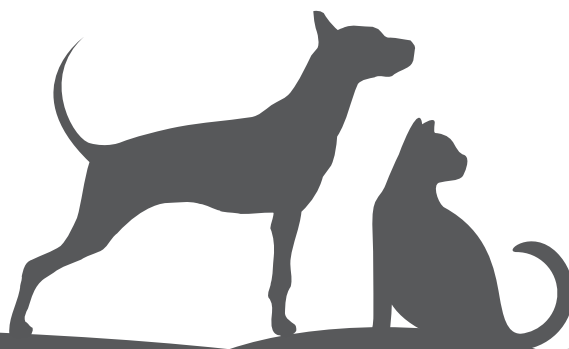


VETERINARY
+ **EXCLUSIVE**

4vets

N A T U R A L
Dog & Cat Diets



Formulated by Dieticians and Veterinarians

www.4vetsnatural.com



Table of contents

4Vets Natural	4
---------------------	---

For dog

Veterinary pet food

Allergy	10
Diabetes	12
Gastro Intestinal	14
Hepatic	16
Joint Mobility	18
Renal	20
Skin Support	22
Urinary Non-Struvite	24
Weight Reduction	26
Air dried diet Allergy	28
Air dried diet Gastro Intestinal	30
Air dried diet Hepatic	32
Air dried diet Renal	34
Air dried diet Weight Reduction	36

Complete pet food

with beef	38
with game	39
with lamb	40
with turkey	41

For cat

Veterinary pet food

Gastro Intestinal	46
Urinary Non-Struvite	48
Weight Reduction	50
Air dried diet Gastro Intestinal	52
Air dried diet Urinary Non-Struvite	54
Air dried diet Weight Reduction	56

Complete pet food

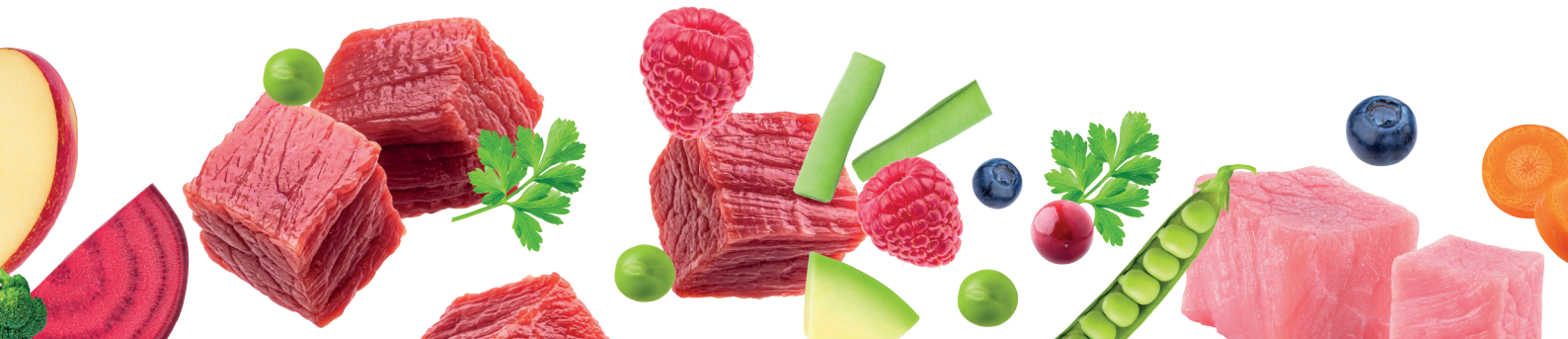
with rabbit	58
with tuna	59
with turkey	60
with veal	61

4Vets Natural

The organism of a dog, which is developing and functioning correctly, requires supplying nutrients in a form of appropriately combined food. It can be delivered in a form of ready-made food and should meet the dog's daily demand for building blocks and energy, as well as for components regulating the speed of metabolic processes. Application of high-quality maintenance food in everyday feeding of a dog should ensure its normal functioning. Unfortunately, sometimes incorrectly selected food of low nutritious value, unfavourable living conditions or individual predispositions connected with age, breed or physiological condition, require changing maintenance food for a veterinary diet. Such food is characterized by a specially selected formula adjusted to a given disease entity, thus constitutes a product of special dietary values. Using the food must be consulted with a veterinarian and precisely adjusted to the nutritional needs of a given dog. The period of applying a veterinary diet is limited and should continue until the symptoms of a given disease entity resolve.



4Vets Natural veterinary diets have been developed based on modern nutritional standards and recommendations regarding nutritional support or nutritional prevention of some disease entities. Precise selection of products and use of high quality biologically active components guarantee personalised nutritional support in every disease entity. One great advantage of veterinary diets of the **4Vets Natural** series is their delicious taste combined with very high digestibility coefficient of all nutrients. This in turn is guaranteed by a high nutritional value of the products used in the production of the diets.

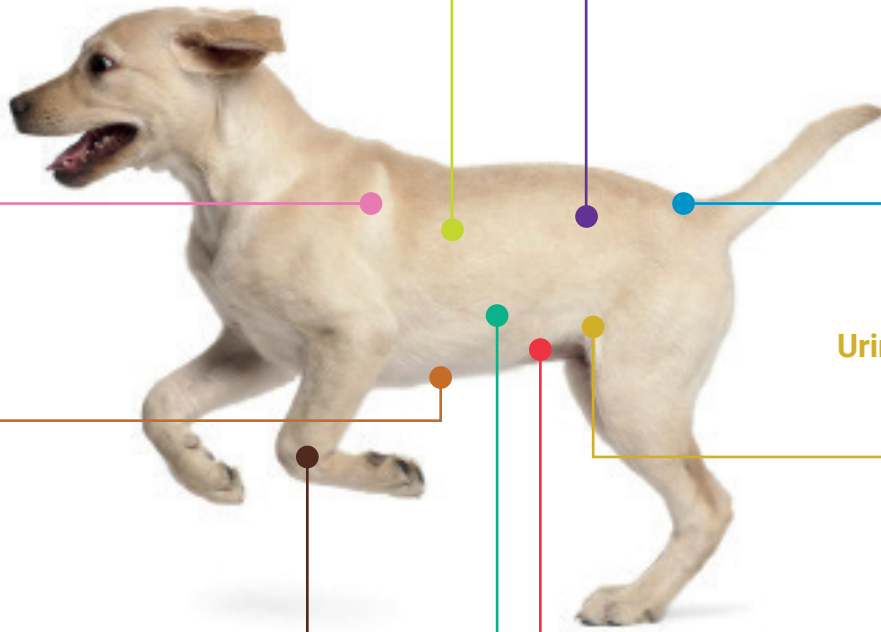


Gastro Intestinal

Allergy

Diabetes

Skin Support



Weight Reduction

Urinary Non-Struvite

Joint Mobility

Renal

Hepatic

Veterinary wet pet food for dogs

■ 185 g / 400 g can



Allergy



Diabetes



Gastro Intestinal



Hepatic



Joint Mobility



Renal



Skin Support



Urinary Non-Struvite



Weight Reduction

Veterinary air dried pet food for dogs

■ 1 kg bag



Allergy



Gastro Intestinal



Hepatic



Renal



Weight Reduction

Complete wet pet food for dogs

■ 400 g / 800 g can



with beef



with game



with lamb



with turkey



Allergy

- High quality of protein
- One source of protein

ALLERGY VETERINARY DIET – nutrient intolerance in animals has an immunological (food allergies) as well as non-immunological (food intolerance) source.

Composition:

lamb 37% (meat 20%, lungs, stomachs, liver), potato starch 4%, salmon oil 3%, linseed oil 1%, carrots 1%, blueberries 1%, apple 1%, spinach 1%, dried brewer's yeast 0.9% (containing prebiotics: mannan-oligosaccharides 0.12% and β -glucans 0.12%), minerals, Plantago seed 0.3%, Mojave yucca 0.05%, seaweed 0.02%.

Source of protein: lamb.

Source of carbohydrate: potato starch.

Analytical constituents: crude protein – 5.5%, crude fat – 5.5%, crude ash – 1.7%, crude fibre – 1%, moisture – 78.4%, calcium – 0.17%, phosphorus – 0.14%, potassium – 0.25%, starch – 4%, Omega-3 fatty acids – 1.15%, Omega-6 fatty acids – 1%.

Additives: nutritional additives/kg: Vitamin D₃ – 450 IU, Vitamin C – 1000 mg, Niacin – 50 mg, Zinc (zinc oxide; zinc chelate of amino acids, hydrate) – 49.5 mg, Vitamin E – 40 mg, Calcium D-pantothenate - 20 mg, Vitamin B₁ (thiamine mononitrate) – 12 mg, Vitamin B₂ (riboflavin) – 9 mg, Folic acid – 4 mg, Vitamin B₆ – 2.5 mg, Manganese (manganese (II) oxide) – 2 mg, Copper (copper (II) sulphate, pentahydrate) – 0.4 mg, Iodine (coated, granulated calcium iodate, anhydrous) – 0.3 mg, Biotin – 0.2 mg, Vitamin B₁₂ – 0.04 mg, Selenium (selenised yeast *Saccharomyces cerevisiae* CNCM I-3060, inactivated) – 0.01 mg.

Metabolic energy in 100 g: 94 kcal.

Recommendations:

A consultation with a veterinarian is advisable before use or before extending the period of administration. It should be used for a period of 3 to 8 weeks. Once symptoms of intolerance have subsided, the diet can be continued for up to 1 year. The recommended daily dose is shown in the table on the packaging. Fresh drinking water should always be available.



A complete pet food diet for dogs with symptoms of food allergies or intolerance. It contains one source of protein and an increased amount of Omega-3 and Omega-6 fatty acids, thanks to which it soothes irritation, regenerates skin and alleviates inflammation. The diet lessens the risk of diarrhoea related to food intolerance.



BETA-GLUCANS
MOS



ZINC CHELATE,
ORGANIC SELENIUM



GRAIN FREE



ONE SOURCE
OF PROTEIN



OMEGA-3
AND OMEGA-6



SEAWEED

Advantages:

Dried brewer's yeast (source of prebiotics: mannano-oligosaccharides and β -glucans) – support immunity and constitute a valuable source of light vitamins and minerals, increase their pool in food and improve their bioavailability in a dog's gastrointestinal tract.

Zinc Chelate, organic Selenium – have a positive impact on the regenerative process, wound healing and the condition of animal coats. Allergy feed contains zinc in hydrated amino-acid chelate, which is more absorbable by the body. Organic selenium produced by strain *Saccharomyces cerevisiae* CNCM increases the bio-availability of this element.

Grain free – the food is free of starchy and often allergenic grains, the source of carbohydrates has been replaced by easy to digest and healthier carbohydrate from potato starch.

One source of protein – lamb is a source of full-value protein. It has a high content of all exogenous amino acids, as well as a high digestibility coefficient and a high biological value, which is necessary to ensure the correct absorption of all amino acids. Additionally, lamb is a source of unsaturated fatty acids.

Omega-3 and Omega-6 fatty acids – high content of fatty acids from the Omega-3 and Omega-6 groups in the appropriate proportion is a condition for biochemical control over inflammation.

Seaweed – provides valuable biologically active compounds, is a source of well assimilable protein, carbohydrates, lipids, vitamins and minerals (K, P, Mg, Ca, Cl, Na, S).



Diabetes

- High quality of protein
- Low level of rapid glucose-releasing carbohydrates

DIABETES VETERINARY DIET – diabetes belongs to multi-factorial medical conditions, which causes are seen in a genetic predisposition, in use of medication with antagonistic to insulin effect, immunological insulin resistance, pancreatitis or in commonly known obesity in adult dogs.

Composition:

turkey 29% (meat 15%, gizzards, liver, hearts, skins), beef 12% (meat 5%, liver, lungs), potato starch 5%, salmon oil 1.2%, apple 1%, blueberries 1%, green beans 1%, minerals, pepper 0.5%, dried brewer's yeast 0.4% (containing prebiotics: mannan-oligosaccharides and β -glucans), linseed oil 0.3%, chicory inulin (prebiotic) 0.3%, Plantago seed 0.3%, Mojave yucca 0.05%.

Sources of carbohydrate: potato starch, chicory inulin.

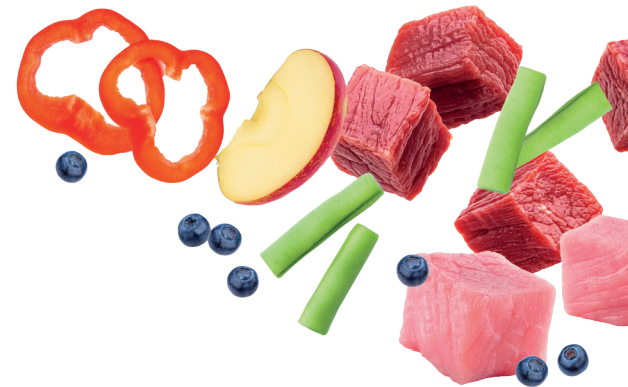
Analytic constituents: crude protein – 5.5%, crude fat – 3.3%, crude ash – 1.3%, crude fibre – 3%, moisture – 77.4%, calcium – 0.15%, phosphorus – 0.1%, total sugars – 0.2%, starch – 5.5%, Omega-3 fatty acids – 0.98%, Omega-6 fatty acids – 0.55%.

Additives: nutritional additives/kg: Vitamin D₃ – 450 IU, Vitamin C – 1000 mg, Niacin – 50 mg, Zinc (zinc oxide; zinc chelate of amino acids, hydrate) – 49.5 mg, Vitamin E – 40 mg, Calcium D-pantothenate – 20 mg, Vitamin B₁ (thiamine mononitrate) – 12 mg, Vitamin B₂ (riboflavin) – 9 mg, Folic acid – 4 mg, Vitamin B₆ – 2.5 mg, Manganese (manganese (II) oxide) – 2 mg, Copper (copper (II) sulphate, pentahydrate) – 0.4 mg, Iodine (coated, granulated calcium iodate, anhydrous) – 0.3 mg, Biotin – 0.2 mg, Vitamin B₁₂ – 0.04 mg, Selenium (selenised yeast *Saccharomyces cerevisiae* CNCM I-3060, inactivated) – 0.01 mg, DL-methionine – 2000 mg, L-carnitine – 1500 mg.

Metabolic energy in 100 g: 81 kcal.

Recommendations:

A consultation with a veterinarian is advisable before use or before extending the period of administration. Use initially for up to 6 months. The recommended daily dose is shown in the table on the packaging. Fresh drinking water should always be available.



A complete pet food diet adjusted to the needs of dogs with confirmed diabetes and overweight, obese dogs, dogs after sterilization in order to prevent diabetes. The diet's fiber and low level of mono- and disaccharides quickly releasing glucose facilitate control of the level of blood sugar and body weight of the dog.



CHICORY ROOT
INULIN



ANTI-AGE



GRAIN FREE



HIGH-QUALITY
OF PROTEIN



MOJAVE YUCCA
AND PLANTAGO
SEEDS



LOW CONTENT
OF MONOSACCHARIDES

Advantages:

Chicory root inulin – a good source of inulin, the probiotic being a feed for physiological bacterial flora in intestines. The correct bacterial flora impedes the development of pathological bacteria in the pet's digestive system, preventing its diseases.

Anti-age – the low level of mono- and disaccharides which release glucose rapidly allows for the process of glycation of proteins to be slowed down. Glycation is the natural process of simple sugars becoming attached to free amino protein residues and occurs in all cells of the body. If glucose is supplied too rapidly to the blood in cases of disorders associated with diabetes (intensified in states of hyperglycaemia), the formation of so-called Advanced Glycation End Products (AGE) occurs. These molecules damage, among other things, collagen and elastin, promoting skin aging. AGE negatively affect the eyes, worsening the development of cataracts, and are involved in the aging of nerve cells

Grain free – the food is free of starchy and often allergenic grains, the source of carbohydrates has been replaced by easy to digest and healthier carbohydrate from potato starch.

High-quality of protein – food based on full value animal protein of low fat content. Implementation protein on that level and of that quality is sufficient enough to enhance tissue regeneration and not be treated as a simple source of protein.

Mojave yucca – the presence of this ingredient stimulates digestible functions and the absorption of nutrients from the digestive tract, stimulating its motility. Added to the diet it decreases a gas build-up and the intensity of poop odour. Additionally, saponins demonstrate antibacterial activity, which suppresses protozoa infections occurred in the intestines, while polyphenols prevent inflammation.

Carbohydrates – in Diabetes feed used starch, which is a polysaccharide, slowly realising glucose. In the case of diabetes, it is extremely important to avoid monosaccharides and disaccharides, which result in a rapid sugar spike in blood and this could be very generous for bodies with incorrect insulin management.

Low fat content – low content and presence of fatty acids only from animal products, without the addition of vegetable oil, ensure maximum engagement of liver and pancreas function and extension of the time necessary to digest them. In addition, polyunsaturated fatty acids from the n-3 group present in salmon fat provide the amount necessary for conditioning biochemical control of inflammatory processes.

L-carnitine – an additive accelerating the metabolism of fat in a body, decreasing the level of cholesterol and glycerides in blood.

Dietary fiber – high content (3% of total food weight) ensures its appropriate water-absorbing, thus the Diabetes Veterinary Diet increases the feeling of satiety and fullness of the gastrointestinal tract. Consequently, it influences faster activation of satiety centres and decreases the feeling of hunger. The presence of dietary fiber in the form of Plantago seeds influences the binding of fat constituents in the contents of the gastrointestinal tract, thus it decreases their digestibility and uses as energy constituents.



Gastro Intestinal

- High quality of protein
- Easily digestible ingredients

GASTRO INTESTINAL VETERINARY DIET – if the symptoms of food intolerance occur, it is important to introduce easy to digest diet without compromising the quantity of protein and fats.

Composition:

turkey 27% (meat 10%, liver, gizzards), salmon fillet 20%, potato starch 6%, salmon oil 2%, carrots 1%, blueberries 1%, apple 1%, peas 1%, linseed oil 1%, minerals, linseed 0.4%, dried brewer's yeast 0.4% (containing prebiotics: mannan-oligosaccharides 0.05% and β -glucans 0.05%), Plantago seed 0.35%, Mojave yucca 0.05%.

Sources of highly digestible ingredients: turkey, salmon fillet, salmon oil, linseed oil.

Gastroprotective substances: linseed, Plantago seed.

Analytical constituents: crude protein – 7.5%, crude fat – 5.5%, crude ash – 1.6%, crude fibre – 1.4%, moisture – 73%, calcium – 0.2%, phosphorus – 0.15%, sodium – 0.2%, potassium – 0.26%, Omega-3 fatty acids – 0.5%, Omega-6 fatty acids – 1.5%.

Additives: nutritional additives/kg: Vitamin D₃ – 450 IU, Vitamin C – 1000 mg, Niacin – 50 mg, Zinc (zinc oxide; zinc chelate of amino acids, hydrate) – 49.5 mg, Vitamin E – 40 mg, Calcium D-pantothenate – 20 mg, Vitamin B₁ (thiamine mononitrate) – 12 mg, Vitamin B₂ (riboflavin) – 9 mg, Folic acid – 4 mg, Vitamin B₆ – 2.5 mg, Manganese (manganese (II) oxide) – 2 mg, Copper (copper (II) sulphate, pentahydrate) – 0.4 mg, Iodine (coated, granulated calcium iodate, anhydrous) – 0.3 mg, Biotin – 0.2 mg, Vitamin B₁₂ – 0.04 mg, Selenium (selenised yeast *Saccharomyces cerevisiae* CNCM I-3060, inactivated) – 0.01 mg, DL-methionine – 1000 mg.

Metabolic energy in 100 g: 112 kcal.

Recommendations:

A consultation with a veterinarian is advisable before use. As soon as digestive and intestinal absorption disturbances are compensated, it should be applied for up to 12 weeks. However, in case of chronic pancreatic failure it must be administered for the entire life of a dog. During convalescence period, it is necessary to continue using until full recovery. The recommended daily dose is shown in the table on the packaging. Fresh drinking water should always be available.



A complete pet food diet for dogs with symptoms of digestion and intestinal absorption disorders or stomach inflammation. It contains easily digestible ingredients and an increased amount of electrolytes, which compensate for losses resulting from the impaired digestion process. After a consultation with a veterinarian, it may be used in cases of chronic pancreas failure. Owing to its high energy value, high concentration of essential nutrients and highly digestible ingredients, it is also recommended during periods of convalescence after illness.



BETA-GLUCANS
MOS



LINSEED



GRAIN FREE



HIGH-QUALITY
OF PROTEIN



OMEGA-3
AND OMEGA-6



DL-METHIONINE

Advantages:

Dried brewer's yeast (source of prebiotics: mannano-oligosaccharides and β -glucans) – support immunity and constitute a valuable source of light vitamin and minerals, increase their pool in food and improve their bioavailability in a dog's gastrointestinal tract.

Linseed – a good source of energy and protein, contains essential fatty acids, which are necessary for correct development, these compounds are not synthesized in the dog's body and need to be supplemented with the feed. Additionally, it protects the intestine.

Grain free – the pet food is free of starchy and often allergenic grains, the source of carbohydrate has been replaced by easy-digestible and healthier carbohydrates from potato starch.

High-quality of protein – food based on full value animal protein of low fat content. Implementation protein on that level and of that quality is sufficient enough to enhance tissue regeneration and not be treated as a simple source of protein.

Omega-3 and Omega-6 fatty acids – high content of fatty acids from the Omega-3 and Omega-6 groups in the appropriate proportion is a condition for biochemical control over inflammation.

Linseed oil and salmon oil – additive of these oils increases the pool of necessary unsaturated fatty acids in the digestion of which liver and pancreas are involved to a smaller degree.

DL-methionine – influences an increase of absorption competitiveness of branched-chain amino acids: leucine, isoleucine and valine, thus increasing the pool of amino acids participating in tissue regeneration.



Hepatic

- Low level of fat
- Highly digestible protein

HEPATIC VETERINARY DIET – recommended for dogs suffering from liver failure or other liver ailments.

Composition:

turkey 34% (meat 20%, liver, gizzards, skins), eggs 6%, potato starch 6%, natural brown rice 4%, linseed oil 2%, artichoke 2%, salmon oil 1%, carrots 1%, blueberries 1%, minerals, spinach 0.5%, dried brewer's yeast 0.5% (containing prebiotics: mannan-oligosaccharides and β -glucans), Plantago seed 0.3%, chicory inulin (prebiotic) 0.3%, milk thistle seed (*Silybum marianum*) 0.02%.

Sources of protein: turkey, eggs, natural brown rice.

Sources of carbohydrate: potato starch, natural brown rice, chicory inulin.

Analytical constituents: crude protein – 5%, crude fat – 3.8%, crude ash – 1.3%, crude fibre – 3%, moisture – 77%, calcium – 0.15%, phosphorus – 0.1%, sodium – 0.2%, copper – 0.6 mg/kg, Omega-6 fatty acids – 1.5%, Omega-3 fatty acids – 0.5%, nitrogen-free extracts (NFE) – 10%.

Additives: nutritional additives/kg: Vitamin D₃ – 300 IU, Vitamin C – 2000 mg, Zinc (zinc oxide; zinc chelate of amino acids, hydrate) – 134 mg, Niacin – 50 mg, Vitamin E – 40 mg, Calcium D-pantothenate – 20 mg, Vitamin B₁ (thiamine mononitrate) – 12 mg, Vitamin B₂ (riboflavin) – 9 mg, Folic acid – 4 mg, Vitamin B₆ – 2.5 mg, Manganese (manganous sulphate, monohydrate) – 2 mg, Iodine (calcium iodate, anhydrous) – 0.3 mg, Biotin – 0.2 mg, Vitamin B₁₂ – 0.04 mg, DL-methionine – 2000 mg, Lysine – 1000 mg, L-carnitine – 900 mg, L-arginine – 600 mg, L-tryptophan – 400 mg.

Metabolic energy in 100 g: 84 kcal.

Recommendations:

A consultation with a veterinarian is advisable before use or before extending the period of administration. The diet should initially be applied for up to 4 months. The recommended daily dose is shown in the table on the packaging. Fresh drinking water should always be available.



Complete pet food diet for dogs with hepatic insufficiency and other liver diseases. A limited amount of high-quality protein has a positive effect on the work of the liver and hepatocyte regeneration and prevents the atrophy of muscle tissue. Highly digestible carbohydrates contained in the diet are a non-protein source of energy, the metabolism of which does not result in the formation of toxic products of protein metabolism.



ARTCHOKE



MILK THISTLE



GRAIN FREE



DRIED BREWER'S YEAST



OMEGA-3
AND OMEGA-6



MOJAVE YUCCA
AND PLANTAGO
SEEDS

Advantages:

Artichoke – contains i.a. cynarine and inulin, which increase the functionality of the digestive system, stimulating metabolic processes. Cynarine, being an organic acid produces bile and demonstrates choleric properties. The quantities and the ratio of polyunsaturated amino acids from the Omega-3 and Omega-6 groups guarantee the proper biochemical inflammation control.

Milk thistle – contains silymarin, which has a positive impact on liver functionality, detoxifying it, stabilizing it and sealing hepatocytes cells.

Grain free – the food is free of stodgy and often allergenic grains, the source of carbohydrates has been replaced by easy to digest and healthier carbohydrate from potato starch.

Dried brewer's yeast (source of prebiotics: mannano-oligosaccharides and β -glucans) – have a positive affect on intestines microbial flora. Hence to the high level of Group B Vitamins, yeast has a great biological value. Introducing yeast in the diet of young dogs is extremely important as they stimulate a wide range of immunological responses.

Omega-3 and Omega-6 fatty acids – high content of fatty acids from the Omega-3 and Omega-6 groups in the appropriate proportion is a condition for biochemical control over inflammation.

Mojave yucca and Plantago seeds – the presence of this ingredient stimulates digestible functions and the absorption of nutrients from the digestive tract, stimulating its motility. Added to the diet it decreases a gas build-up and the intensity of poop odour. Additionally, saponins demonstrate antibacterial activity, which suppresses protozoa infections occurred in the intestines, while polyphenols prevent inflammation.

High-quality of protein – easily digestible feed built on the wholesome protein of animal origin. A high digestibility coefficient guarantees to maintain proper body nourishment. Protein with high nutritional value ensures the regeneration of hepatocytes and their more efficient activity, contributing to the disposal of ammonia and other harmful metabolites.

Low fat content – limited to essential minimum guarantees a proper energy supply, without increasing the bile acids production. The quantity and the ratio of polyunsaturated fatty acids from n-3 and n-6 group determine the proper biochemical control of inflammatory processes.

Chicory root inulin – being a natural probiotic, it impacts the stabilization of gastrointestinal microbiota, positively effects proper digestion process and nutrients absorption.



Joint Mobility

- High quality of protein
- Eicosapentanoic acid (EPA) & Omega-3

JOINT MOBILITY VETERINARY DIET – dysfunction in the movement system are considered to be one of the most common causes of chronic pain affecting dogs. The study shows that 20% of dogs aged above one year suffer from joint problems, from which 95% exceed five years. The therapy is limited to inhibition of cartilage degeneration, mitigating inflammation and pain relief.

Composition:

turkey 35% (meat 17%, gizzards, liver, hearts, skins), eggs 8%, beef 6% (meat 3%, liver), potato starch 6%, salmon oil 3%, blueberries 1.5%, linseed oil 1%, pumpkin 1%, apple 1%, minerals, broccoli 0.5%, dried brewer's yeast 0.4% (containing prebiotics: mannan-oligosaccharides and β -glucans), Plantago seed 0.3%, Mojave yucca 0.05%, chondroitin sulphate (shark cartilage extract) 0.03%, New Zealand green-lipped mussel 0.02%, glucosamine 0.02%.

Analytical constituents: crude protein – 7%, crude fat – 6.3%, crude ash – 1.5%, crude fibre – 1%, moisture – 77.2%, calcium – 0.2%, phosphorus – 0.15%, Omega-3 fatty acids – 0.96%, EPA – 0.15%, total vitamin E – 4.2 mg/100 g.

Additives: nutritional additives/kg: Vitamin D₃ – 450 IU, Vitamin C – 1000 mg, Niacin – 50 mg, Zinc (zinc oxide; zinc chelate of amino acids, hydrate) – 49.5 mg, Vitamin E – 40 mg, Calcium D-pantothenate – 20 mg, Vitamin B₁ (thiamine mononitrate) – 12 mg, Vitamin B₂ (riboflavin) – 9 mg, Folic acid – 4 mg, Vitamin B₆ – 2.5 mg, Manganese (manganese (II) oxide) – 2 mg, Copper (copper (II) sulphate, pentahydrate) – 0.4 mg, Iodine (coated, granulated calcium iodate, anhydrous) – 0.3 mg, Biotin – 0.2 mg, Vitamin B₁₂ – 0.04 mg, Selenium (selenised yeast *Saccharomyces cerevisiae* CNCM I-3060, inactivated) – 0.01 mg, DL-methionine – 1000 mg, L-carnitine – 1000 mg.

Metabolic energy in 100 g: 103 kcal.

Recommendations:

A consultation with a veterinarian is advisable before use or before extending the period of administration. Use initially for up to 3 months. The recommended daily dose is shown in the table on the packaging. Fresh drinking water should always be available.



A complete pet food diet for dogs suffering a degeneration of the joints and joint cartilage, having problems with movement, older dogs and dogs with an inbred predisposition to joint degeneration. The use of chondroprotective substances in the diet helps to alleviate pain and inflammation as well as improves joint mobility.



SHARK CARTILAGE



PERNA
CANALICULUS



GRAIN FREE



DRIED BREWER'S
YEAST



OMEGA-3 & OMEGA-6
AND EICOSAPENTAENOIC
ACID (EPA)



MOJAVE YUCCA
AND PLANTAGO
SEEDS

Advantages:

Chondroitin and glucosamine – the addition of two main chondroprotective products make the Joint Mobility veterinary diet a product, which applied regularly will ensure the protection of joints against degradation and will influence their regeneration. Glucosamine constitutes a building material for proteoglycans present in joint cartilage, improving joint mobility. Chondroitin acts as an analgesic and stabilizes the width of the joint gap. Additionally, this compound is a strong anti-inflammatory factor, it stops cartilage degeneration and stimulates its regeneration.

Perna Canaliculus – the presence of powdered New Zealand green-lipped mussel positively affects dogs with osteoporosis and slows down osteoarthritis.

Grain free – the food is free of starchy and often allergenic grains, the source of carbohydrates has been replaced by easy to digest and healthier carbohydrate from potato starch.

Dried brewer's yeast (source of prebiotics: mannano-oligosaccharides and β-glucans) – have a positive effect on intestines microbial flora. Hence to the high level of Group B Vitamins, yeast has a great biological value. Introducing yeast in the diet of young dogs is extremely important as they stimulate a wide range of immunological responses.

The presence of fatty acids – from both animal products (salmon fat) and flaxseed oil ensures maximum engagement of polyunsaturated fatty acids from n-3 and n-6 groups in biochemical control of the creation of proinflammatory cytokines in cartilaginous tissue, thus making it less sensitive to inflammatory processes.

Eicosapentaenoic acid (EPA) – the presence of these acids guarantees to maintain the physiological functions of joints by specific repression of the cyclooxygenase (COX-2) activity, due to which the course of inflammatory processes is controlled, as well as it demonstrates analgesic properties.

Mojave yucca – the presence of this ingredient stimulates digestive functions, and absorption of nutrients from digestive track and it stimulates its motility. Added to the diet it decreases the build-up of gas and the intensity of poop odour. Additionally, saponins demonstrate antibacterial activity, which suppresses protozoa infections occurred in the intestines, while polyphenols prevent inflammation.

Plantago seed – having properties of highly absorbed protein along with low fermentation level in a small intestine, it positively affects the intestinal motility. Additionally, it shows the capability of binding water and creating gel, normalizing digestive food content.

High-quality of protein – food based on sources of whole protein of animal origin with low fat content. The addition of chicken egg increases the coefficient of limiting amino acids to the level guaranteeing the maintenance of appropriate proportion in the absorption of all amino acids. Due to the use of such sources of protein, it is possible to supply an appropriate proportion of energy and building components, which are necessary for maintaining a stable body weight – the basic requirement in preventing degenerative joint diseases.

L-carnitine – ensures targeted and facilitated transport of medium-chain fatty acids to mitochondria, where they are metabolized. The lipolytic effect obtained in this way influences reduction of body weight.



Renal

- High quality and low level of protein
- Low level of phosphorus

RENAL VETERINARY DIET – renal failure in a disease state that leads to nephron dysfunction. There are two types of this condition. Acute renal failure develops as a result of ischemia or toxic nephrons and presents with rapidly progressive symptoms. Chronic kidney failure can progress over weeks to months and is considered the most common cause of death in dogs.

Composition:

turkey 17% (meat 7%, hearts, skins, gizzards), beef 12% (meat 5%, liver, hearts), potato starch 6%, eggs 4%, potatoes 3%, salmon oil 2.3%, cranberries 2%, linseed oil 1.5%, carrots 1.5%, minerals, dried brewer's yeast 0.4% (containing prebiotics: mannan-oligosaccharides and β -glucans), chicory inulin (prebiotic) 0.3%, Plantago seed 0.3%, parsley leaves 0.25%, Mojave yucca 0.05%.

Sources of protein: turkey, beef, eggs.

Analytical constituents: crude protein – 4.5%, crude fat – 5%, crude ash – 1.3%, crude fibre – 1.2%, moisture – 76%, calcium – 0.14%, phosphorus – 0.09%, potassium – 0.22%, sodium – 0.07%, Omega-3 fatty acids – 1.36%, Omega-6 fatty acids – 0.83%.

Additives: nutritional additives/kg: Vitamin D₃ – 450 IU, Vitamin C – 1000 mg, Niacin – 50 mg, Zinc (zinc oxide; zinc chelate of amino acids, hydrate) – 49.5 mg, Vitamin E – 40 mg, Calcium D-pantothenate – 20 mg, Vitamin B₁ (thiamine mononitrate) – 12 mg, Vitamin B₂ (riboflavin) – 9 mg, Folic acid – 4 mg, Vitamin B₆ – 2.5 mg, Manganese (manganese (II) oxide) – 2 mg, Copper (copper (II) sulphate, pentahydrate) – 0.4 mg, Iodine (coated, granulated calcium iodate, anhydrous) – 0.3 mg, Biotin – 0.2 mg, Vitamin B₁₂ – 0.04 mg, Selenium (selenised yeast *Saccharomyces cerevisiae* CNCM I-3060, inactivated) – 0.01 mg, DL-methionine – 2000 mg, L-carnitine – 800 mg.

Metabolic energy in 100 g: 100 kcal.

Recommendations:

A consultation with a veterinarian is advisable before use or before extending the period of administration. As for chronic renal failure, use for up to 6 months initially. The recommended daily dose is shown in the table on the packaging. Fresh drinking water should always be available.



A complete pet food diet for dogs with chronic renal failure. After the ailment has subsided or with older dogs it may be a part of prophylactics. The lowered content of phosphorus, sodium and the restricted amount of high-quality protein have a beneficial effect on kidney function. The Omega-3 and -6 fatty acids included in the diet inhibit the process of inflammation.



CHICORY INULIN



OMEGA-3
AND OMEGA-6



GRAIN FREE



DRIED BREWER'S
YEAST



HIGH-QUALITY
OF PROTEIN



MOJAVE YUCCA
AND PLANTAGO
SEED

Advantages:

Chicory – a good source of inulin, the probiotic being a feed for physiological bacterial flora in intestines. The correct bacterial flora impedes development of pathological bacteria in pet's digestive system, preventing its diseases.

Omega-3 and Omega-6 fatty acids – the presence of fatty acids from both animal products and flaxseed oil ensures the maximum engagement of polyunsaturated fatty acids from Omega-3 and Omega-6 groups in biochemical control of proinflammatory cytokines creation. Moreover, by a unique way of stopping the activity of cyclooxygenase (COX-2), they demonstrate analgesic and relaxing properties for the muscles of blood vessels in a kidney.

Grain free – the food is free of stodgy and often allergenic grains, the source of carbohydrates has been replaced by easy to digest and healthier carbohydrate from potato starch.

High-quality of protein – food based on full value animal protein and low-fat content. The supplement of chicken egg increases the coefficient of limiting amino acid to the level guaranteeing the maintenance of appropriate proportion in the absorption of all amino acids. The amount of protein covers the minimum amount of amino acids required by an organism, however it does not cause an excessive catabolic process or creation of products that could disrupt kidney function.

Presence of mannan–oligosaccharides, yeasts, Mojave yucca – extract stimulates digestive functions and absorption of nutrients from the gastrointestinal tract and stimulates its peristalsis.

Lowered phosphorus content – in the Kidney Support veterinary diet composition has been adjusted in such a way that the diet included a lowered phosphorus content thus inhibiting degenerative processes in a kidney.

L–carnitine – ensures targeted and facilitated transport of medium-chain fatty acids to mitochondria where they are metabolized. The lipolytic effect obtained in this way influences the reduction of body weight and stops the exploitation of protein for energetic purposes, thus products of protein catabolism are directed to kidneys in a smaller degree.



Skin Support

- High quality of protein
- One source of protein

SKIN SUPPORT VETERINARY DIET – to ensure a healthy, good looking hair cover, the right functionality of the skin as a tissue, which creates hair and claws, is essential. If the skin is affected by factors impairing its functions, there is high probability of dysfunctions in the appearance of hair and nails.

Composition:

turkey 38% (meat 20%, gizzards, liver, hearts, skins), potato starch 6%, salmon oil 3%, pumpkin 2%, linseed oil 1.5%, blueberries 1.5%, cranberries 1%, avocado 0.5%, minerals, dried brewer's yeast 0.4% (containing prebiotics: mannan-oligosaccharides and β -glucans), Plantago seed 0.3%, Mojave yucca 0.05%, seaweed 0.02%.

Analytical constituents: crude protein – 5%, crude fat – 6.5%, crude ash – 1.3%, crude fibre – 1.9%, moisture – 75.3%, calcium – 0.15%, phosphorus – 0.1%, linoleic acid – 1.65 %, sum of EPA and DHA – 0.19 %.

Additives: nutritional additives/kg: Vitamin D₃ – 450 IU, Vitamin C – 1000 mg, Niacin – 50 mg, Zinc (zinc oxide; zinc chelate of amino acids, hydrate) – 49.5 mg, Vitamin E – 40 mg, Calcium D-pantothenate – 20 mg, Vitamin B₁ (thiamine mononitrate) – 12 mg, Vitamin B₂ (riboflavin) – 9 mg, Folic acid – 4 mg, Vitamin B₆ – 2.5 mg, Manganese (manganese (II) oxide) – 2 mg, Copper (copper (II) sulphate, pentahydrate) – 0.4 mg, Iodine (coated, granulated calcium iodate, anhydrous) – 0.3 mg, Biotin – 0.2 mg, Vitamin B₁₂ – 0.04 mg, Selenium (selenised yeast *Saccharomyces cerevisiae* CNCM I-3060, inactivated) – 0.01 mg.

Metabolic energy in 100 g: 108 kcal.

Recommendations:

A consultation with a veterinarian is advisable before use. Use initially for up to 2 months. The recommended daily dose is shown in the table on the packaging. Fresh drinking water should always be available.



A complete pet food diet recommended for dogs with dermatological symptoms and in the case of undesired reactions of the digestive tract. Thanks to its high content of linoleic acid (LA) and the combination of eicosapentaenoic acid (EPA) and docosahexaenoic acid (DHA), organic zinc and selenium, it supports skin functions and the condition of hair cover. Thanks to using a single source of animal protein, it may be used as an elimination diet.



SEAWEEDS



LINOLEIC ACID
EPA & DHA



GRAIN FREE



PUMPKIN



DRIED BREWER'S
YEAST



MOJAVE YUCCA
AND PLANTAGO
SEED

Advantages:

Seaweeds – provides valuable biologically active compounds, is a source of well assimilable protein, carbohydrates, lipids, vitamins and minerals (K, P, Mg, Ca, Cl, Na, S). Additionally, it contains large amounts of exogenous amino acids and essential unsaturated fatty acids.

Omega-3 and Omega-6 fatty acids – high content of these acids in the appropriate ratio is a condition for biochemical control over inflammation. A combination of poultry fat with salmon fat and flaxseed oil is a guarantee of stopping inflammatory processes, which are the primary cause of dermatoses.

Grain free – the food is free of stodgy and often allergenic grains, the source of carbohydrates has been replaced by easy-digestible and healthier carbohydrates from potato starch.

Pumpkin – with high nutritional value sourced mainly from a high content of sugar, protein, fat, pectin, organic acids, β -carotene and vitamins A, B, B₁, B₂, B₃, B₆. Pumpkin is also a great source of minerals like potassium, phosphorus, calcium and magnesium.

Dried brewer's yeast (source of prebiotics: mannano-oligosaccharides and β -glucans) – have a positive effect on intestines microbial flora. Hence to the high level of Group B Vitamins, yeast has a great biological value. Introducing yeast in the diet of young dogs is extremely important as they stimulate a wide range of immunological responses.

Mojave yucca – the presence of this ingredient stimulates digestible functions, absorption of nutrients from the digestive tract, stimulating its motility. Added to the diet decreases a build up of gas and the intensity of poop odour.

Plantago seed – having properties of highly absorbed protein along with low fermentation level in a small intestine, it positively affects intestinal motility. Additionally, it shows the capability of biding water and creating gel, normalizing digestive food content.



Urinary Non-Struvite

- High quality of protein
- Low level of magnesium

URINARY NON-STRVITE VETERINARY DIET – for a proper body functionality of the body, it is necessary to effectively get rid of products derived from unnecessary. Metabolic processes taking place with support kidneys assistance. Metabolites like as urea, creatinine, electrolytes and minerals are excreted from the body through the urine.

Composition:

turkey 15% (meat 6%, gizzards, skins), beef 12% (meat 4%, hearts, liver), potato starch 6%, potatoes 4%, eggs 4%, cranberries 3%, blueberries 2%, linseed oil 2%, salmon oil 1%, minerals, dried brewer's yeast 0.4% (containing prebiotics: mannan-oligosaccharides and β -glucans), Plantago seed 0.3%, parsley leaves 0.25%, Mojave yucca 0.05%.

Analytical constituents: crude protein – 4.5%, crude fat – 5.4%, crude ash – 1.1%, crude fibre – 1.2%, moisture – 78.8%, calcium – 0.13%, phosphorus – 0.1%, sodium – 0.14%, magnesium – 0.02%, potassium – 0.04%, chloride – 0.20%, sulfur – 0.20%.

Additives: nutritional additives/kg: Vitamin D₃ – 450 IU, Vitamin C – 1000 mg, Niacin – 50 mg, Zinc (zinc oxide; zinc chelate of amino acids, hydrate) – 49.5 mg, Vitamin E – 40 mg, Calcium D-pantothenate – 20 mg, Vitamin B₁ (thiamine mononitrate) – 12 mg, Vitamin B₂ (riboflavin) – 9 mg, Folic acid – 4 mg, Vitamin B₆ – 2.5 mg, Manganese (manganese (II) oxide) – 2 mg, Copper (copper (II) sulphate, pentahydrate) – 0.4 mg, Iodine (coated, granulated calcium iodate, anhydrous) – 0.3 mg, Biotin – 0.2 mg, Vitamin B₁₂ – 0.04 mg.

Urine acidifying substance/kg: DL-methionine – 2000 mg.

Metabolic energy in 100 g: 93 kcal.

Recommendations:

A consultation with a veterinarian is advisable before use or before extending the period of administration. The diet is recommended for 5 to 12 weeks to dissolve struvite stones and initially for up to 6 months to reduce their re-formation. The recommended daily dose is shown in the table on the packaging. Fresh drinking water should always be available.



A complete pet food diet for dogs with diseases of the urinary tract. It supports the treatment of bladder inflammation and dissolving struvite crystals thanks to the lowered content of magnesium and protein as well as its urine acidifying properties. The diet may be a part of prophylactics after the ailment has subsided.



pH CONTROL FORMULA



CRANBERRY



GRAIN FREE



DRIED BREWER'S YEAST



OMEGA-3 AND OMEGA-6



MOJAVE YUCCA AND PLANTAGO SEED

Advantages:

pH control formula – the formula is designed to lower the pH of the dog's urine. The acidifying effect on urine is possible due to the use of DL-methionine and cranberry in the feed in appropriate amounts, which limits the re-formation of struvite stones. Struvite stones, or phosphate-ammonium-magnesium, are formed in urine which has an alkaline pH.

Cranberry – contain a hippuric acid, which shows bacteriostatic activity. Moreover, contained proanthocyanidins connect with bacterial fimbria, deactivating them, thanks to which it prevents their adhesion to urinary tract's tissues. Cranberries effectively decrease the level of pH in urine, resulting in lower bacteria growth in the bladder and the urinary tract. Thanks to these abilities they assist in a healing process of a urinary tract, as well as they, help with recurring infections of the urinary tract.

Grain free – the food is free of starchy and often allergenic grains, the source of carbohydrates has been replaced by easy to digest and healthier carbohydrate from potato starch.

Dried brewer's yeast (source of prebiotics: mannano-oligosaccharides and β-glucans) – have a positive effect on intestines microbial flora. Hence to the high level of Group B Vitamins, yeast has a great biological value. Introducing yeast in the diet of young dogs is extremely important as they stimulate a wide range of immunological responses.

Omega-3 and Omega-6 fatty acids – both from animal products (salmon oil) and flaxseed oil ensure the maximum engagement of polyunsaturated fatty acids from Omega-3 and Omega-6 groups in biochemical control of proinflammatory cytokines production. Moreover, by a unique way of stopping the activity of cyclooxygenase (COX-2), they demonstrate analgesic properties.

Mojave yucca – the presence of this ingredient stimulates digestible functions and the absorption of nutrients from the digestive tract, stimulating its motility. Added to the diet it decreases a gas build-up and the intensity of poop odour. Additionally, saponins demonstrate antibacterial activity, which suppresses protozoa infections occurred in the intestines, while polyphenols prevent inflammation.

High-quality of protein – food based on sources of whole protein of animal origin with low fat content. The addition of chicken egg increases the coefficient of limiting amino acid to the level guaranteeing the maintenance of appropriate proportion in the absorption of all amino acids. The amount of protein covers the minimum amount of amino acids required by an organism, however, it does not cause excess catabolization or the creation of products that could disrupt kidney function.

Low sodium and potassium content – in the Urinary Support Veterinary Diet the nutrient composition has been adjusted in such a way that the diet is low-sodium and low-potassium. As a result, the osmotic pressure exerted by electrolytes decreases. It positively affects the kidneys' functionality, increases the glomerular filtration and accelerates the dissolution of struvite stones.

Plantago seed – having properties of highly absorbed protein along with low fermentation level in a small intestine, it positively affects intestinal motility. Additionally, it shows the capability of binding water and creating gel, normalizing digestive food content.



Weight Reduction

- High quality of protein
- Low fat content

WEIGHT REDUCTION VETERINARY DIET – obesity and overweightness have become more common problems in veterinary practice. It is estimated that over 30% of the dog population in developed countries could be affected by obesity.

Composition:

turkey 44% (meat 20%, liver, gizzards, hearts), potato starch 3%, carrots 1.5%, blueberries 1.5%, potatoes 1%, broccoli 1%, minerals, salmon oil 0.4%, dried brewer's yeast 0.4% (containing prebiotics: mannan-oligosaccharides and β -glucans), chicory inulin (prebiotic) 0.3%, Plantago seed 0.3%, MSM (methyl sulphonyl methane) 0.08%, Mojave yucca 0.05%.

Analytical constituents: crude protein – 9%, crude fat – 2.2%, crude ash – 1.2%, crude fibre – 4%, moisture – 80%, calcium – 0.15%, phosphorus – 0.1%.

Additives: nutritional additives/kg: Vitamin D₃ – 450 IU, Vitamin C – 1000 mg, Niacin – 50 mg, Zinc (zinc oxide; zinc chelate of amino acids, hydrate) – 49.5 mg, Vitamin E – 40 mg, Calcium D-pantothenate – 20 mg, Vitamin B₁ (thiamine mononitrate) – 12 mg, Vitamin B₂ (riboflavin) – 9 mg, Folic acid – 4 mg, Vitamin B₆ – 2.5 mg, Manganese (manganese (II) oxide) – 2 mg, Copper (copper (II) sulphate, pentahydrate) – 0.4 mg, Iodine (coated, granulated calcium iodate, anhydrous) – 0.3 mg, Biotin – 0.2 mg, Vitamin B₁₂ – 0.04 mg, Selenium (selenised yeast *Saccharomyces cerevisiae* CNCM I-3060, inactivated) – 0.01 mg, DL-methionine – 1000 mg, L-carnitine – 1000 mg.

Metabolic energy in 100 g: 63 kcal.

Recommendations:

A consultation with a veterinarian is advisable before use. In order for the pet to lose weight, the portion size should be based on the estimated optimal body mass (target weight). In order to successfully reduce or maintain optimum body weight, it is important not to exceed the recommended daily energy intake. Use until reaching the target body mass. The diet fully satisfies the nutritional requirements of dogs during weight-loss therapy and leads to improvement in their state of health, aimed at preventing. Recommended daily dose is shown in the table on the packaging. Fresh drinking water should always be available.



A complete pet food diet recommended for overweight and obese dogs as well as after sterilization in order to prevent the development of overweightness and obesity. Thanks to the low fat content and L-carnitine, the diet assists in the process of weight loss. The increased amount of fiber alleviates feeling of hunger.



CHICORY INULIN



L-CARNITINE



GRAIN FREE



METHYL SULPHONYL
METHANE (MSM)



LOW FAT CONTENT



HIGH-QUALITY
OF PROTEIN

Advantages:

Chicory – a good source of inulin, the probiotic being a feed for physiological bacterial flora in intestines. The correct bacterial flora impedes development of pathological bacteria in pet's digestive system, preventing its diseases.

L-karnityna – ensures targeted and facilitated transport of fatty acids to mitochondria where they are subject to metabolism. Accelerated catabolism of energy achieved in this manner contributes to increased lipolysis of adipose tissue.

Grain free – the food is free of stodgy and often allergenic grains, the source of carbohydrates has been replaced by easy to digest and healthier carbohydrate from potato starch.

Methyl sulphonyl methane (MSM) – the presence of this constituent in the diet is an important factor in reducing pain caused by the overloading osteoarticular system in the case of overweight and obese dogs.

Low fat content – low content and a presence of fatty acids only from animal products, without the addition of vegetable oil, ensure maximum engagement of liver and pancreas function, along with extending the time necessary to digest them. In addition, polyunsaturated fatty acids from the n-3 group present in salmon fat provide the amount necessary for conditioning biochemical control of inflammatory process ability.

High-quality protein – food based on full value animal protein of low fat content. Due to the use of such sources of protein, it is possible to supply energy constituents of longer digestion and absorption time.

Dietary fiber – high content of fiber (4% of total feed weight) ensures its correct water absorption, due to which Weight Reduction Veterinary Diet enhances the feeling of satiation.

Carrot – dietary fiber included in carrots enhances blood circulation and mobility of intestines, creating a proper environment for bacterial flora development.



Air dried diet Allergy

- High quality of protein
- One source of protein

ALLERGY VETERINARY DIET – nutrient intolerance in animals has an immunological (food allergies) as well as non-immunological (food intolerance) source.

Composition:

beef 70% (meat 30%, lungs, hearts, kidneys, liver), potato starch, beef fat, pea starch, carrots 1%, parsley root, minerals, blueberries 1%, avocado 1%, raspberries 1%, spinach 1%, powder cellulose, lecithins, salmon oil 0.4%, linseed oil 0.4%, Plantago seed, dried brewer's yeast 0.3% (containing prebiotics: mannan-oligosaccharides 0.05% and β -glucans 0.05%), chicory inulin (prebiotic), fructo-oligosaccharides 0.2%, linseed, seaweed 0.1%, glucosamine, chondroitin sulphate, Mojave yucca, New Zealand green-lipped mussel.

Source of protein: beef.

Source of carbohydrates: potato starch, pea starch, powder cellulose, chicory inulin, fructo-oligosaccharides.

Technological additives: natural antioxidants (tocopherols, rosemary extract).

Analytical constituents: crude protein – 36%, crude fat – 18%, crude ash – 7%, crude fibre – 4%, moisture – 9%, calcium – 0.7%, phosphorus – 0.6%, Omega-3 fatty acids – 0.58%, Omega-6 fatty acids – 1.22%.

Additives: nutritional additives/kg: Vitamin D₃ – 450 IU, Vitamin C – 1000 mg, Vitamin E – 100 mg, Niacin – 50 mg, Zinc (zinc oxide) – 30 mg, Calcium D-pantothenate – 20 mg, Vitamin B₁ (thiamine mononitrate) – 12 mg, Vitamin B₂ (riboflavin) – 9 mg, Folic acid – 4 mg, Vitamin B₆ (pyridoxine hydrochloride) – 2.5 mg, Manganese (manganese (II) oxide) – 2 mg, Copper (copper (II) sulphate, pentahydrate) – 0.4 mg, Iodine (coated, granulated calcium iodate, anhydrous) – 0.3 mg, Biotin – 0.2 mg, Vitamin B₁₂ – 0.04 mg, Choline chloride – 2000 mg.

Metabolic energy in 100 g: 370 kcal.

Recommendations:

A consultation with a veterinarian is advisable before use or before extending the period of administration. It should be used for a period of 3 to 8 weeks. Once symptoms of intolerance have subsided, the diet can be continued for up to 1 year. The recommended daily portion is shown in the table on the packaging. Fresh drinking water should always be available.



A complete dried pet food diet for dogs with symptoms of food allergies or intolerance. It contains one source of protein and an increased amount of Omega-3 and Omega-6 fatty acids, thanks to which it soothes irritation, regenerates skin and alleviates inflammation. The diet lessens the risk of diarrhoea related to food intolerance.



SEAWEEDS



OMEGA-3
AND OMEGA-6



DRIED BREWER'S
YEAST



ONE SOURCE
OF PROTEIN



GRAIN FREE



GENTLY
AIR DRIED



NO RENDERED MEALS
NO PRESERVATIVES
NO COLOURANTS



BETA-GLUCANS
MOS & FOS

Advantages:

Seaweeds – provide valuable biologically active compounds and are a source of easily digestible proteins, carbohydrates, lipids, vitamins (e.g. β -carotene) and minerals (including potassium, phosphorus, magnesium, calcium, sodium, chlorine, sulphur, iodine and iron).

Dried brewer's yeast (source of prebiotics: mannan-oligosaccharides and β -glucans) – supports the immune system, improves digestion and takes care of your dog's bowel movements. A valuable source of easily digestible vitamins and minerals, increasing their pool in the food and improving their bioavailability in the dog's digestive tract.

Omega-3 and Omega-6 fatty acids – the high content of these polyunsaturated acids from linseed oil and salmon oil in the correct proportions determines the biochemical control of inflammatory skin processes and allergy symptoms.

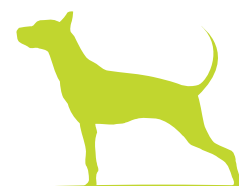
One source of protein – beef is a source of complete protein high in essential amino acids with a high digestibility coefficient. Protein with a high biological value is essential to ensure the correct absorption of all amino acids. The use of a single protein source allows the elimination of potential triggers of an allergic reaction or food intolerance.

Grain free – potato and pea starch are included in the food, so it is free of hard-to-digest and often allergenic grains. The base of the recipe is meat and offal supplemented with vegetables and fruit.

Gently air dried – a special process of drying at low temperatures allows as many nutrients as possible from the raw materials used for the production of the dried food to be preserved, while guaranteeing its microbiological safety. Thanks to an innovative technology, this dried food is a complete, highly nutritional, varied and at the same time convenient form of nutrition for dogs suffering from diseases, combining the crispness of dry food and the palatability of wet food.

No rendered meals, no preservatives, no colourants – without animal meals, colourants or preservatives; fresh meat, offal, fruit and vegetables are the raw material base for the production of this pet food, the same as for the production of wet food. The addition of fruits and vegetables and nutritional supplements allows you to diversify the diet of your pet and provide it with bioactive substances that help fight the disorders it suffers from. Putting the modern concept of dog nutrition into practice, no animal meals, colourants, preservatives (including glycerin), artificial flavours or flavour enhancers have been used in the production of this dried food.

Beta-glucans MOS & FOS – these are prebiotics, which are an ideal medium for the development of beneficial microbes that make up the gut microbiota, positively affecting the digestive system and the body's immunity. By increasing their volume, they stimulate the intestines to excrete unnecessary metabolic products. The source of mannanoligosaccharides (MOS) and β -glucans in the feed are dried brewer's yeast.



Air dried diet Gastro Intestinal

- High quality of protein
- Easily digestible ingredients

GASTRO INTESTINAL VETERINARY DIET – if the symptoms of food intolerance occur, it is important to introduce easy to digest diet without compromising the quantity of protein and fats.

Composition:

beef 55% (meat 20%, lungs, hearts, kidneys), turkey 15% (meat 10%, liver), potato starch, beef fat, eggs, banana 2%, linseed 1,5%, minerals, carrots 1%, sweet potatoes 1%, peas 1%, apple 1%, berries 1%, raspberries 1%, powder cellulose, salmon oil 0.5%, chia seeds 0.5%, lecithins, linseed oil 0.4%, dried brewer's yeast 0.4% (containing prebiotics: mannan-oligosaccharides 0.05% and β -glucans 0.05%), glutamine, turmeric 0.3%, Plantago seed 0.3%, seaweed, fructo-oligosaccharides 0.2%, glucosamine, chondroitin sulphate, Mojave yucca, New Zealand green-lipped mussel, dried rosemary 0.02%.

Sources of highly digestible ingredients: beef, turkey, eggs, salmon oil, linseed oil.

Gastroprotective substances: linseed, Plantago seed, chia seeds.

Technological additives: natural antioxidants (tocopherols, rosemary extract).

Analytical constituents: protein – 36%, crude fat – 20%, crude ash – 7%, crude fibre – 3%, moisture – 9%, calcium – 0.7%, phosphorus – 0.6%, sodium – 0.75%, potassium – 0.68%.

Additives: nutritional additives/kg: Vitamin D₃ – 450 IU, Vitamin C – 1500 mg, Niacin – 50 mg, Vitamin E – 40 mg, Zinc (zinc oxide) – 30 mg, Calcium D-pantothenate – 20 mg, Vitamin B₁ (thiamine mononitrate) – 12 mg, Vitamin B₂ (riboflavin) – 9 mg, Folic acid – 4 mg, Vitamin B₆ (pyridoxine hydrochloride) – 2.5 mg, Manganese (manganese (II) oxide) – 2 mg, Copper (copper (II) sulphate, pentahydrate) – 0.4 mg, Iodine (coated, granulated calcium iodate, anhydrous) – 0.3 mg, Biotin – 0.2 mg, Vitamin B₁₂ – 0.04 mg, Choline chloride – 2000 mg, Taurine – 1000 mg.

Metabolic energy in 100 g: 384 kcal.

Recommendations:

A consultation with a veterinarian is advisable before use. As soon as digestive and intestinal absorption disturbances are compensated, it should be applied for up to 12 weeks. However, in case of chronic pancreatic failure it must be administered for the entire life of a dog. During convalescence period, it is necessary to continue using until full recovery. The recommended daily dose is shown in the table on the packaging. Fresh drinking water should always be available.



A complete dried pet food diet for dogs with symptoms of digestion and intestinal absorption disorders or stomach inflammation. It contains easily digestible ingredients and an increased amount of electrolytes, which compensate for losses resulting from the impaired digestion process. After a consultation with a veterinarian, it may be used in cases of chronic pancreas failure. Owing to its high energy value, high concentration of essential nutrients and highly digestible ingredients, it is also recommended during periods of convalescence after illness.



LINSEED



CHIA SEEDS
AND PLANTAGO
SEED



DRIED BREWER'S
YEAST



TURMERIC



GRAIN FREE



GENTLY
AIR DRIED



NO RENDERED MEALS
NO PRESERVATIVES
NO COLOURANTS



BETA-GLUCANS
MOS & FOS

Advantages:

Linseed – a source of energy and protein, contains essential fatty acids necessary for proper development; these compounds are not synthesised in the animal body and must be supplied with food. In addition, it has the intestinal shielding function.

Chia seeds and Plantago seed – excellent for relieving digestive disorders, as they contain mucilage, dietary fibre (mainly pectin), facilitate the movement of faecal masses and prevent constipation. They also help regulate the number of symbiotic bacteria in the gastrointestinal tract, thereby strengthening the body's defences.

Dried brewer's yeast (source of prebiotics: mannano-oligosaccharides and β -glucans) – a beneficial effect on the intestinal bacterial flora. Yeast stimulates the response of immune cells located in the lymphoid tissue clusters of the gastrointestinal wall, making it more resistant to environmental factors.

Turmeric – its addition increases the synthesis of bile acids in the liver and their secretion with bile, which it has a beneficial effect on the efficiency of digestion and the absorption of fats from the gastrointestinal tract.

Grain free – the food is free of the hard-to-digest and often allergenic grain, which has been replaced by the more digestible and healthier carbohydrate derived from potato starch.

Gently air dried – a special process of drying at low temperatures allows as many nutrients as possible from the raw materials used for the production of the dried food to be preserved, while guaranteeing its microbiological safety. Thanks to an innovative technology, this dried food is a complete, highly nutritional, varied and at the same time convenient form of nutrition for dogs suffering from diseases, combining the crispness of dry food and the palatability of wet food.

No rendered meals, no preservatives, no colourants – without animal meals, colourants or preservatives; fresh meat, offal, fruit and vegetables are the raw material base for the production of this pet food, the same as for the production of wet food. The addition of fruits and vegetables and nutritional supplements allows you to diversify the diet of your pet and provide it with bioactive substances that help fight the disorders it suffers from. Putting the modern concept of dog nutrition into practice, no animal meals, colourants, preservatives (including glycerin), artificial flavours or flavour enhancers have been used in the production of this dried food.

Beta-glucans MOS & FOS – these are prebiotics, which are an ideal medium for the development of beneficial microbes that make up the gut microbiota, positively affecting the digestive system and the body's immunity. By increasing their volume, they stimulate the intestines to excrete unnecessary metabolic products. The source of mannanoligosaccharides (MOS) and β -glucans in the feed are dried brewer's yeast.

High quality of protein – feed based on raw materials of animal origin characterised by a high content of complete protein with a high limiting amino acid ratio and a very favourable fatty acid composition.

Linseed oil and salmon oil – the addition of these oils increases the pool of essential fatty acids, in the digestion of which the pancreas is less involved.



Air dried diet Hepatic

- Low level of fat
- Highly digestible protein

HEPATIC VETERINARY DIET – recommended for dogs suffering from liver failure or other liver ailments.

Composition:

beef 50% (meat 20%, lungs, hearts, kidneys), turkey 10% (meat 6%, liver), potato starch, eggs, beef fat, sweet potatoes 3%, whey protein, carrots 2%, banana 2%, apple 2%, minerals, spinach 1%, raspberries 1%, blueberries 1%, powder cellulose, glutamine, lecithins, turmeric, linseed, dried brewer's yeast 0.3% (containing prebiotics: mannan-oligosaccharides 0.05% and β -glucans 0.05%), Plantago seed 0.3%, salmon oil 0.2%, fructo-oligosaccharides 0.2%, black cumin oil 0.1%, chicory inulin (prebiotic), seaweed, glucosamine, chondroitin sulphate, milk thistle seed (*Silybum marianum*) 0.03%, Mojave yucca 0.02%, New Zealand green-lipped mussel.

Protein source: beef, turkey, eggs, whey protein.

Technological additives: natural antioxidants (tocopherols, rosemary extract).

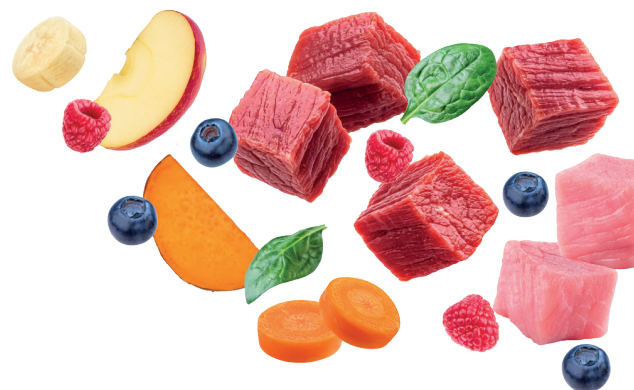
Analytical constituents: crude protein – 36%, crude fat – 10%, crude ash – 6%, crude fibre – 3%, moisture – 9%, calcium – 0.6%, phosphorus – 0.5%, sodium – 0.75%, copper – 0.03%.

Additives: nutritional additives/kg: Vitamin D₃ – 300 IU, Vitamin C – 1000 mg, Vitamin E – 150 mg, Niacin – 50 mg, Zinc (zinc oxide) – 30 mg, Calcium D-pantothenate – 20 mg, Vitamin B₁ (thiamine mononitrate) – 12 mg, Vitamin B₂ (riboflavin) – 9 mg, Folic acid – 4 mg, Vitamin B₆ (pyridoxine hydrochloride) – 2.5 mg, Manganese (manganous sulphate, monohydrate) – 2 mg, Iodine (calcium iodate, anhydrous) – 0.3 mg, Biotin – 0.2 mg, Vitamin B₁₂ – 0.04 mg, Choline chloride – 3000 mg, L-carnitine – 3000 mg, Taurine – 1000 mg.

Metabolic energy in 100 g: 337 kcal.

Recommendations:

A consultation with a veterinarian is advisable before use or before extending the period of administration. The diet should initially be applied for up to 4 months. The recommended daily dose is shown in the table on the packaging. Fresh drinking water should always be available.



A complete dried pet food diet for dogs suffering from liver failure and other liver ailments. Moderate levels of selected and highly digestible protein has a beneficial effect on liver function and hepatocyte regeneration as well as prevents atrophy of muscle tissue.



BLACK CUMIN OIL



MILK THISTLE



DRIED BREWER'S YEAST



MOJAVE YUCCA, PLANTAGO SEED



GRAIN FREE



GENTLY AIR DRIED



**NO RENDERED MEALS
NO PRESERVATIVES
NO COLOURANTS**



**BETA-GLUCANS
MOS & FOS**

Advantages:

Black cumin oil – has antioxidant and anti-inflammatory properties, and the thymoquinone it contains has a hepatoprotective effect and reduces liver enzyme activity that is elevated as a result of disease.

Milk thistle – contains silymarin, which has a positive effect on the liver – detoxifying it, stabilising and sealing the membranes of the hepatocytes. In addition, it supports the self-regeneration of liver cells.

Dried brewer's yeast (source of prebiotics: mannano-oligosaccharides and β -glucans) – a beneficial effect on the intestinal bacterial flora. Yeast has a high biological value due to its high content of B vitamins.

Mojave yucca – the presence of this ingredient stimulates the digestive function, absorption of nutrients from the digestive tract and regulates its peristalsis. When added to the diet, it has the effect of reducing intestinal gas production and the intensity of faecal odour. In addition, Mojave yucca saponins exhibit antibacterial activity that suppresses protozoan infections arising in the gut, and polyphenols have anti-inflammatory effects.

Grain free – the food is free of the hard-to-digest and often allergenic grain, which has been replaced by the more digestible and healthier carbohydrate derived from potato starch.

Gently air dried – a special process of drying at low temperatures allows as many nutrients as possible from the raw materials used for the production of the dried food to be preserved, while guaranteeing its microbiological safety. Thanks to an innovative technology, this dried food is a complete, highly nutritional, varied and at the same time convenient form of nutrition for dogs suffering from diseases, combining the crispness of dry food and the palatability of wet food.

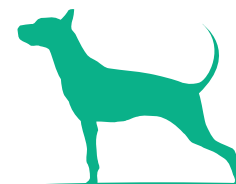
No rendered meals, no preservatives, no colourants – without animal meals, colourants or preservatives; fresh meat, offal, fruit and vegetables are the raw material base for the production of this pet food, the same as for the production of wet food. The addition of fruits and vegetables and nutritional supplements allows you to diversify the diet of your pet and provide it with bioactive substances that help fight the disorders it suffers from. Putting the modern concept of dog nutrition into practice, no animal meals, colourants, preservatives (including glycerin), artificial flavours or flavour enhancers have been used in the production of this dried food.

Beta-glucans MOS & FOS – these are prebiotics, which are an ideal medium for the development of beneficial microbes that make up the gut microbiota, positively affecting the digestive system and the body's immunity. By increasing their volume, they stimulate the intestines to excrete unnecessary metabolic products. The source of mannanoligosaccharides (MOS) and β -glucans in the feed are dried brewer's yeast.

High quality of protein – food based on complete sources of animal protein. The high digestibility coefficient ensures that the body's nutrition is maintained. Protein with a high nutritional value ensures that hepatocytes can regenerate and function more efficiently, contributing to the removal of ammonia, other harmful metabolites, etc.

Low fat – fat content limited to the minimum necessary, guaranteeing the body's correct energy supply but not increasing the production of bile and bile acids. The content of polyunsaturated fatty acids of the Omega-3 and Omega-6 families in salmon oil and black cumin oil is a prerequisite for the proper biochemical control of inflammatory processes.

Plantago seed – combines the properties of highly soluble fibre with low fermentability in the small intestine, exerting a positive effect on improving intestinal peristalsis. In addition, they can bind water and form a gel, therefore normalising the passage of digestive contents.



Air dried diet Renal

- High quality and low level of protein
- Low level of phosphorus

RENAL VETERINARY DIET – renal failure in a disease state that leads to nephron dysfunction. There are two types of this condition. Acute renal failure develops as a result of ischemia or toxic nephrons and presents with rapidly progressive symptoms. Chronic kidney failure can progress over weeks to months and is considered the most common cause of death in dogs.

Composition:

beef 40% (meat 18%, lungs, hearts, kidneys), turkey 13% (meat 8%, liver), potato starch, beef fat, eggs, cranberry 3%, apple 3%, parsley root, whey protein, salmon oil 2%, minerals, blueberries 2%, black currant 1%, carrots 1%, beetroot 1%, parsley leaves 1%, linseed, powder cellulose, oat flakes, chicory inulin (prebiotic) 0.5%, lecithins, seaweed, dried brewer's yeast 0.3% (containing prebiotics: mannan-oligosaccharides 0.05% and β -glucans 0.05%), Plantago seed 0.3%, fructo-oligosaccharides 0.2%, black cumin oil 0.1%, fruit extracts (chokeberry extract, pomegranate extract), glucosamine, chondroitin sulphate, Mojave yucca 0.02%, New Zealand green-lipped mussel.

Source of protein: beef, turkey, eggs, whey protein.

Technological additives: natural antioxidants (tocopherols, rosemary extract).

Analytical constituents: crude protein – 24%, crude fat – 18%, crude ash – 5%, crude fibre – 5%, moisture – 9%, calcium – 0.5%, phosphorus – 0.25%, potassium – 0.57%, sodium – 0.68%, Omega-3 fatty acids – 0.77%, Omega-6 fatty acids – 1.60%.

Additives: nutritional additives/kg: Vitamin D₃ – 450 IU, Vitamin C – 1000 mg, Vitamin E – 150 mg, Niacin – 50 mg, Zinc (zinc oxide) – 30 mg, Calcium D-pantothenate – 20 mg, Vitamin B₁ (thiamine mononitrate) – 12 mg, Vitamin B₂ (riboflavin) – 9 mg, Folic acid – 4 mg, Vitamin B₆ (pyridoxine hydrochloride) – 2.5 mg, Manganese (manganese (II) oxide) – 2 mg, Copper (copper (II) sulphate, pentahydrate) – 0.4 mg, Iodine (coated, granulated calcium iodate, anhydrous) – 0.3 mg, Biotin – 0.2 mg, Vitamin B₁₂ – 0.04 mg, Choline chloride – 1000 mg, Taurine – 1000 mg.

Metabolic energy in 100 g: 374 kcal.

Recommendations:

A consultation with a veterinarian is advisable before use or before extending the period of administration. As for chronic renal failure, use for up to 6 months initially. The recommended daily dose is indicated in the table on the packaging. Fresh drinking water should always be available.



A complete dried pet food diet for dogs with chronic renal failure. After the ailment has subsided or with older dogs it may be a part of prophylactics. The lowered content of phosphorus, sodium and the restricted amount of high-quality protein have a beneficial effect on kidney function. The Omega-3 and -6 fatty acids included in the diet inhibit the process of inflammation.



CRANBERRY



OMEGA-3
AND OMEGA-6



DRIED BREWER'S
YEAST



PLANTAGO SEED,
MOJAVE YUCCA



GRAIN FREE



GENTLY
AIR DRIED



NO RENDERED MEALS
NO PRESERVATIVES
NO COLOURANTS



BETA-GLUCANS
MOS & FOS

Advantages:

Cranberry – the hippuric acid it contains has a bacteriostatic effect; in addition, the proanthocyanidins, by binding to bacterial fimbriae, have an anti-adhesive effect, preventing them from adhering to the epithelial cells of the urinary tract. It effectively lowers the pH of the urine, resulting in a reduced ability to colonise uropathogens in the bladder and urinary outflow tract. Thanks to these properties, it supports the treatment of infections and recurrent, chronic urinary tract infections in dogs.

Omega-3 and Omega-6 fatty acids – the presence of fatty acids from both animal-derived raw materials (including salmon oil) and black cumin oil ensures the maximum involvement of polyunsaturated fatty acids from the Omega-3 and Omega-6 families in the biochemical control of pro-inflammatory cytokine formation and through specific inhibition of cyclooxygenase (COX-2) activity; they exhibit analgesic and relaxant properties on the vascular smooth muscle in the kidney.

Dried brewer's yeast, Plantago seed, Mojave yucca – stimulate the digestive function and absorption of nutrients from the digestive tract and stimulate peristalsis.

Grain free – the food is free of the hard-to-digest and often allergenic grain, which has been replaced by the more digestible and healthier carbohydrate derived from potato starch.

Gently air dried – a special process of drying at low temperatures allows as many nutrients as possible from the raw materials used for the production of the dried food to be preserved, while guaranteeing its microbiological safety. Thanks to an innovative technology, this dried food is a complete, highly nutritional, varied and at the same time convenient form of nutrition for dogs suffering from diseases, combining the crispness of dry food and the palatability of wet food.

No rendered meals, no preservatives, no colourants – without animal meals, colourants or preservatives; fresh meat, offal, fruit and vegetables are the raw material base for the production of this pet food, the same as for the production of wet food. The addition of fruits and vegetables and nutritional supplements allows you to diversify the diet of your pet and provide it with bioactive substances that help fight the disorders it suffers from. Putting the modern concept of dog nutrition into practice, no animal meals, colourants, preservatives (including glycerin), artificial flavours or flavour enhancers have been used in the production of this dried food.

Beta-glucans MOS & FOS – these are prebiotics, which are an ideal medium for the development of beneficial microbes that make up the gut microbiota, positively affecting the digestive system and the body's immunity. By increasing their volume, they stimulate the intestines to excrete unnecessary metabolic products. The source of mannanoligosaccharides (MOS) and β -glucans in the feed are dried brewer's yeast.

High quality protein – food based on sources of wholesome animal protein with low fat content. The addition of egg raises the limiting amino acid ratio to a level that guarantees the correct ratio in the use of all amino acids. The amount of protein covers the body's minimum requirement for amino acids but does not result in excessive catabolisation and the formation of products that could interfere with kidney function.

Reduced phosphorus content – the raw material composition has been selected so that the diet contains a reduced phosphorus content, therefore inhibiting degenerative changes in the kidney.



Air dried diet Weight Reduction

- High quality of protein
- Low fat content

WEIGHT REDUCTION VETERINARY DIET – obesity and overweightness have become more common problems in veterinary practice. It is estimated that over 30% of the dog population in developed countries could be affected by obesity.

Composition:

beef 55% (meat 24%, lungs, hearts, kidneys), turkey 10% (meat 6%, liver), potato starch, apple 2%, sweet potato 2%, banana 2%, carrots 2%, eggs, whey protein, minerals, beef fat, blueberries 1%, asparagus 1%, raspberries 1%, cranberry 1%, powder cellulose, lecithins, linseed, turmeric, dried brewer's yeast 0.4% (containing prebiotics: mannan-oligosaccharides 0.05% and β -glucans 0.05%), salmon oil 0.3%, Plantago seed 0.3%, chicory inulin (prebiotic) 0.2%, fructo-oligosaccharides 0.2%, glutamine, black cumin oil 0.1%, seaweed, MSM (methyl sulphonyl methane) 0.08%, glucosamine, chondroitin sulphate, Mojave yucca, New Zealand green-lipped mussel.

Technological additives: natural antioxidants (tocopherols, rosemary extract).

Analytical constituents: crude protein – 36%, crude fat – 10%, crude ash – 6%, crude fibre – 5%, moisture – 9%, calcium – 0.6%, phosphorus – 0.5%.

Additives: nutritional additives/kg: Vitamin D₃ – 450 IU, Vitamin C – 1000 mg, Vitamin E – 150 mg, Niacin – 50 mg, Zinc (zinc oxide) – 30 mg, Calcium D-pantothenate – 20 mg, Vitamin B₁ (thiamine mononitrate) – 12 mg, Vitamin B₂ (riboflavin) – 9 mg, Folic acid – 4 mg, Vitamin B₆ (pyridoxine hydrochloride) – 2.5 mg, Manganese (manganese (II) oxide) – 2 mg, Copper (copper (II) sulphate, pentahydrate) – 0.4 mg, Iodine (coated, granulated calcium iodate, anhydrous) – 0.3 mg, Biotin – 0.2 mg, Vitamin B₁₂ – 0.04 mg, Choline chloride – 4000 mg, L-carnitine – 3000 mg, Taurine – 1000 mg.

Metabolic energy in 100 g: 330 kcal.

Recommendations:

It is recommended to consult a veterinarian before use. In order for the pet to lose weight, the portion size should be based on the estimated optimal body mass (target weight). In order to successfully reduce or maintain optimum body weight, it is important not to exceed the recommended daily energy intake. Use until reaching the target body mass. The diet fully satisfies the nutritional requirements of dogs during weight-loss therapy and leads to improvement in their state of health, aimed at preventing. Recommended daily dose is shown in the table on the packaging. Fresh drinking water should always be available.



A complete dried pet food diet recommended for overweight and obese dogs as well as after sterilization in order to prevent the development of overweightness and obesity. Thanks to the low fat content and L-carnitine, the diet assists in the process of weight loss. The increased amount of fiber alleviates feelings of hunger.



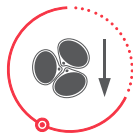
CHICORY INULIN



L-CARNITINE



METHYL SULPHONYL
METHANE (MSM)



LOW FAT



GRAIN FREE



GENTLY
AIR DRIED



NO RENDERED MEALS
NO PRESERVATIVES
NO COLOURANTS



BETA-GLUCANS
MOS & FOS

Advantages:

Chicory inulin – a prebiotic, i.e. a nutrient for the physiological intestinal flora. The correct intestinal flora hinders the growth of pathological bacteria in the animals' digestive tract and therefore, prevents gastrointestinal diseases.

L-carnitine – provides targeted and facilitated transport of fatty acids to the mitochondria, where metabolised; the resulting accelerated catabolism of energy contributes to increased lipolysis of adipose tissue.

Methyl sulphonyl methane (MSM) – the presence of this ingredient in the diet is an important factor in reducing pain associated with osteoarticular stress in overweight and obese dogs.

Low fat – the low fat content and presence of fatty acids derived from raw materials of animal origin ensures the maximum involvement of liver and pancreas functions and prolongs the time required for digestion. In addition, polyunsaturated fatty acids of the omega-3 and omega-6 family present in salmon oil and black cumin oil in the right proportions condition the biochemical control of inflammatory processes.

Grain free – the food is free of the hard-to-digest and often allergenic grain, which has been replaced by the more digestible and healthier carbohydrate derived from potato starch.

Gently air dried – a special process of drying at low temperatures allows as many nutrients as possible from the raw materials used for the production of the dried food to be preserved, while guaranteeing its microbiological safety. Thanks to an innovative technology, this dried food is a complete, highly nutritional, varied and at the same time convenient form of nutrition for dogs suffering from diseases, combining the crispness of dry food and the palatability of wet food.

No rendered meals, no preservatives, no colourants – without animal meals, colourants or preservatives; fresh meat, offal, fruit and vegetables are the raw material base for the production of this pet food, the same as for the production of wet food. The addition of fruits and vegetables and nutritional supplements allows you to diversify the diet of your pet and provide it with bioactive substances that help fight the disorders it suffers from. Putting the modern concept of dog nutrition into practice, no animal meals, colourants, preservatives (including glycerin), artificial flavours or flavour enhancers have been used in the production of this dried food.

Beta-glucans MOS & FOS – these are prebiotics, which are an ideal medium for the development of beneficial microbes that make up the gut microbiota, positively affecting the digestive system and the body's immunity. By increasing their volume, they stimulate the intestines to excrete unnecessary metabolic products. The source of mannanoligosaccharides (MOS) and β -glucans in the feed are dried brewer's yeast.

Dietary fibre – the high content of dietary fibre (derived from fruit and vegetables and cellulose) ensures adequate water absorption in the food, which increases the feeling of satiety and fills the gastrointestinal tract, resulting in the faster stimulation of the satiety centres and the reduced feeling of hunger.

Plantago seed – combines the properties of highly soluble fibre with low fermentability in the small intestine, exerting a positive effect on improving intestinal peristalsis. In addition, they can bind water and form a gel, therefore normalising the passage of digestive contents.



With beef

4Vets Natural pet food with beef is a complete, nutritional product that covers 100% of the demand for nutrients, minerals, vitamins and valuable fatty acids essential for health and fitness. The simple formula is based on high-quality meat and animal derivatives, including beef, a raw material with low-fat content. 4Vets Natural pet food provides complete protein in the correct ratio of all amino acids. The addition of linseed oil, a source of valuable n-6 unsaturated fatty acids, contributes to healthy skin and pelage. It regulates the cardiovascular system and brain development in adult dogs of all breeds.

Composition:

beef 40% (liver, hearts, meat, tripes), pork 25% (lungs, meat, kidneys, gullets), minerals, linseed oil 0.2%.

Analytical constituents:

crude protein – 9%, crude fat – 7%, crude ash – 2.5%, crude fibre – 0.8%, moisture – 78%, calcium – 0.3%, phosphorus – 0.25%.

Additives: nutritional additives/kg:

Vitamin D₃ – 450 IU, Vitamin E – 40 mg, Zinc (zinc oxide) – 30 mg, Manganese (manganese (II) oxide) – 2 mg, Copper (copper (II) sulphate, pentahydrate) – 0.4 mg, Iodine (coated, granulated calcium iodate, anhydrous) – 0.3 mg.

Recommendations:

Pet food should be served at room temperature in at least two meals a day. Diet changes should be made gradually for approximately five days. Fresh drinking water should always be available.



With game

4Vets Natural pet food with game meat is a complete, nutritional product which covers 100% of the demand for nutrients, minerals and vitamins essential for the health and condition. Thanks to its precisely developed composition, this product reduces the possibility of diseases in adult dogs of all breeds and shortens the recovery process after a disease. The basic raw materials - meat and animal derivatives including game meat - increase the nutritional value and provide complete protein and valuable fatty acids. The addition of linseed oil provides n-6 unsaturated acids responsible for the proper functioning of the cardiovascular system and brain function. They make the skin healthy and the pelage strong and shiny.

Composition:

beef 30% (liver, hearts, tripes), pork 25% (lungs, kidneys, meat, gullets), game 10% (meat, liver), minerals, linseed oil 0.2%.

Analytical constituents:

crude protein – 9%, crude fat – 7%, crude ash – 2.5%, crude fibre – 0.8%, moisture – 78%, calcium – 0.3%, phosphorus – 0.25%.

Additives: nutritional additives/kg:

Vitamin D₃ – 450 IU, Vitamin E – 40 mg, Zinc (zinc oxide) – 30 mg, Manganese (manganese (II) oxide) – 2 mg, Copper (copper (II) sulphate, pentahydrate) – 0.4 mg, Iodine (coated, granulated calcium iodate, anhydrous) – 0.3 mg.

Recommendations:

Pet food should be served at room temperature in at least two meals a day. Diet changes should be made gradually for approximately five days. Fresh drinking water should always be available.



With lamb

4Vets Natural pet food with Lamb is a complete, nutritional product which covers 100% of the daily nutrient, mineral and vitamin demand of adult dogs of all breeds. Thanks to its precisely developed composition, this product makes a meal easy to digest and does not contribute to the development of overweight and obesity if the suggested amounts to be fed are adhered to. The main raw materials in the product are meat and animal derivatives including lamb, which is a source of high-quality protein and fat. The addition of linseed oil has a positive effect on the skin condition and makes the pelage healthy and shiny. The product was developed by animal nutritionists and does not contain added grains, preservatives or colouring agents.

Composition:

beef 30% (liver, hearts, tripes), pork 25% (lungs, meat, kidneys, gullets), lamb 10% (meat, liver), minerals, linseed oil 0.2%.

Analytical constituents:

crude protein – 9%, crude fat – 7%, crude ash – 2.5%, crude fibre – 0.8%, moisture – 78%, calcium – 0.3%, phosphorus – 0.25%.

Additives: nutritional additives/kg:

Vitamin D₃ – 450 IU, Vitamin E – 40 mg, Zinc (zinc oxide) – 30 mg, Manganese (manganese (II) oxide) – 2 mg, Copper (copper (II) sulphate, pentahydrate) – 0.4 mg, Iodine (coated, granulated calcium iodate, anhydrous) – 0.3 mg.

Recommendations:

Pet food should be served at room temperature in at least two meals a day. Diet changes should be made gradually for approximately five days. Fresh drinking water should always be available.



With turkey

4Vets Natural complete pet food with turkey is a complete, nutritional product that covers 100% of the demand for nutrients, minerals and vitamins essential for the health and condition of adult dogs of all breeds. Thanks to its precisely developed composition, 4 Vets Natural pet food reduces the risk of diet-related ailments and at the same time supports the recovery process after disease. The main raw materials in the product are meat and derivatives of animal origin, which are a source of complete protein with the correct ratio of amino acids and fatty acids. The addition of linseed oil provides n-6 unsaturated acids responsible for supporting the proper functioning of the brain and the nervous system. They keep the skin healthy and the pelage strong and shiny.

Composition:

beef 30% (liver, hearts, tripes), pork 25% (lungs, meat, kidneys, gullets), turkey 10% (meat, liver), minerals, linseed oil 0.2%.

Analytical constituents:

crude protein – 9%, crude fat – 7%, crude ash – 2.5%, crude fibre – 0.8%, moisture – 78%, calcium – 0.3%, phosphorus – 0.25%.

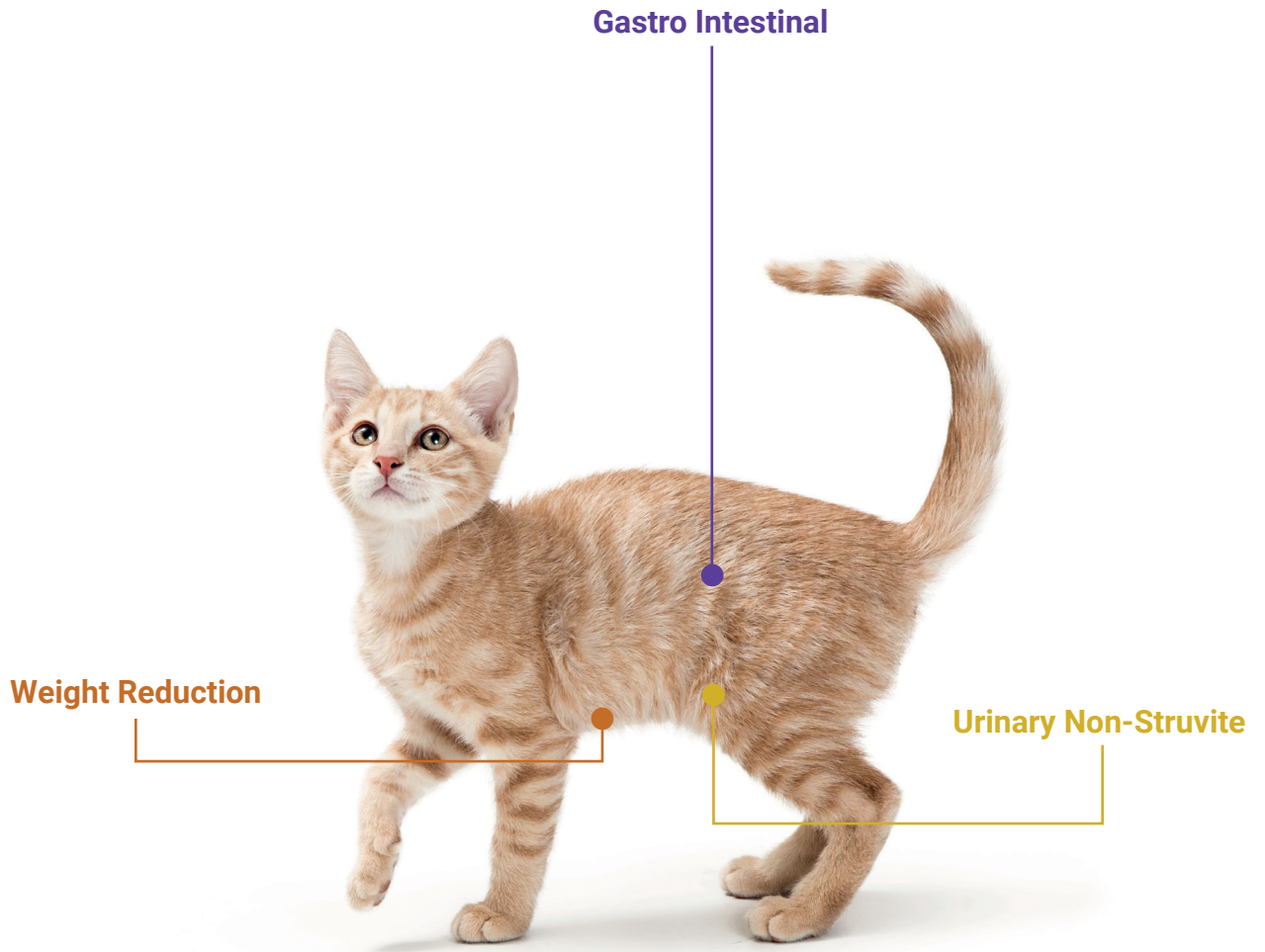
Additives: nutritional additives/kg:

Vitamin D3 – 450 IU, Vitamin E – 40 mg, Zinc (zinc oxide) – 30 mg, Manganese (manganese (II) oxide) – 2 mg, Copper (copper (II) sulphate, pentahydrate) – 0.4 mg, Iodine (coated, granulated calcium iodate, anhydrous) – 0.3 mg.

Recommendations:

Pet food should be served at room temperature in at least two meals a day. Diet changes should be made gradually for approximately five days. Fresh drinking water should always be available.





Veterinary wet pet food for cats

■ 185 g can



Gastro Intestinal



Urinary Non-Struvite



Weight Reduction

Veterinary air dried pet food for cats

■ 1 kg bag



Gastro Intestinal



Urinary Non-Struvite



Weight Reduction

Complete wet pet food for cats

■ 185 g can



sterilised with rabbit



with tuna



with turkey



with veal

Gastro Intestinal

- One source of protein
- Easily digestible ingredients
- Electrolytes

GASTRO INTESTINAL VETERINARY DIET – in a case where symptoms of feed intolerance occur, digestive disorders, vomiting, diarrhoea from both small and large intestine. In these cases, it is important to introduce an easily digestible diet, which due to the content of easily digestible protein and fat with high coefficients of biological value ensures nourishment and regeneration of the organism.

Composition:

turkey 45.5% (meat 25%, liver, hearts, gizzards, skins), potato starch 3%, salmon oil 1%, blueberries 1%, pumpkin 0.5%, linseed 0.4%, chicory inulin 0.3%, minerals, Plantago seed 0.24%, fructo-oligosaccharides 0.2%, dried brewer's yeast 0.2% (containing prebiotics: mannan-oligosaccharides 0.05% and β -glucans 0.05%), chestnut flour 0.02%, dried marigold 0.02%, milk thistle seed (*Silybum marianum*) 0.02%.

Sources of highly digestible ingredients: turkey, salmon oil.

Gastroprotective substances: linseed, Plantago seed.

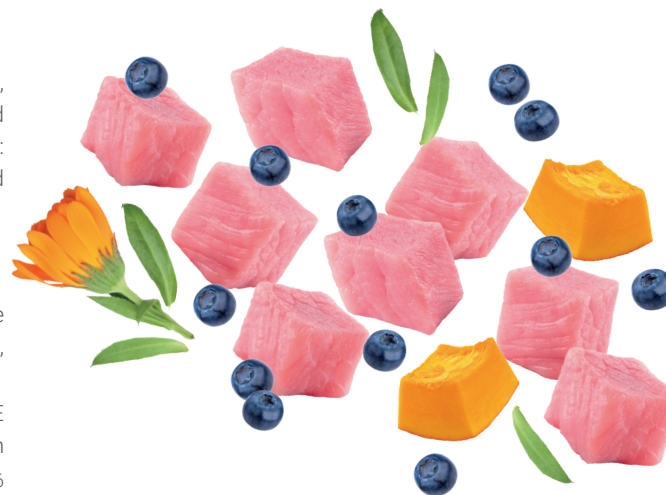
Analytical constituents: crude protein – 8.5%, crude fat – 6.2%, crude ash – 1.5%, crude fibre – 0.4%, moisture – 77%, sodium – 0.3%, potassium – 0.28%, calcium – 0.25%, phosphorus – 0.22%, Omega-3 fatty acids – 0.3%, Omega-6 fatty acids – 1.4%.

Additives: nutritional additives/kg: Vitamin D₃ – 240 IU, Vitamin C – 1050 mg, Vitamin E – 95 mg, Zinc (zinc oxide; zinc chelate of glycine, hydrate) – 13 mg, Niacin – 6 mg, Vitamin B₁ (thiamine mononitrate) – 3.75 mg, Vitamin B₂ (riboflavin) – 1.9 mg, Vitamin B₆ – 1.9 mg, Manganese (manganous sulphate, monohydrate) – 0.5 mg, Iodine (calcium iodate, anhydrous) – 0.4 mg, Copper (copper (II) sulphate, pentahydrate) – 0.2 mg, Folic acid – 0.12 mg, Biotin – 0.09 mg, Vitamin B₁₂ – 0.012 mg, Taurine – 800 mg, DL-methionine – 300 mg, L-carnitine – 250 mg.

Metabolic energy in 100 g: 105 kcal.

Recommendations:

A consultation with a veterinarian is advisable before use. As soon as digestive and intestinal absorption disturbances are compensated, it should be applied for up to 12 weeks. However, in case of chronic pancreatic failure it must be administered for the entire life of a cat. During convalescence period, it is necessary to continue using until full recovery. The recommended daily dose is shown in the table on the packaging. Fresh drinking water should always be available.



A complete pet food diet for cats with symptoms of digestion and intestinal absorption disorders or stomach inflammation. It contains easily digestible ingredients and an increased amount of electrolytes, which compensate for losses resulting from the impaired digestion process. After a consultation with a veterinarian, it may be used in cases of chronic pancreas failure. Owing to its high energy value, high concentration of essential nutrients and highly digestible ingredients, it is also recommended during periods of convalescence after illness.



BETA-GLUCANS
MOS & FOS



LINSEED



GRAIN FREE



ONE SOURCE
OF PROTEIN



CALENDULA
OFFICINALIS



PLANTAGO
SEEDS

Advantages:

Dried brewers' yeast (sources of prebiotics: mannan-oligosaccharides and β -glucans) – their presence stimulates the response of immune system cells located in the lymphoid tissue clusters of the gastrointestinal wall, making it more resistant to the environmental factors.

Linseed – mucilaginous substances contained in linseed have a protective and coating effect. They have a soothing effect on the irritated digestive tract and protect the stomach walls.

Grain free – the food is free of the hard-to-digest and often allergenic grain, which has been replaced by the more digestible and healthier carbohydrate derived from potato starch.

One source of protein – turkey meat is characterised by lower fat and a favourable ratio of unsaturated to saturated fatty acids, as well as being a source of high biological value protein, which ensures a proper supply of essential amino acids.

Calendula officinalis – has haemostatic and antiseptic properties. It is recommended in gastritis and intestinal infections as well as in inflammation of bile ducts. A salicylic acid content reduces platelet aggregation and essential oils have a cholepoietic effect.

Plantago seed – combine the properties of highly soluble fibre with low fermentability in the small intestine, have a positive effect on improving intestinal peristalsis. Additionally, they have water-binding and gel-forming properties, thus normalizing the passage of digestive contents.

Chicory inulin and fructooligosaccharides – are classified as prebiotics, which stimulates the growth of beneficial bacteria in the colon. They regulate the function of the digestive tract and increase the absorption of mineral components.

DL-methionine – increases the competitiveness of absorption of branched-chain amino acids: leucine, isoleucine and valine, thus increasing the content of amino acids involved in the regeneration of body tissues.



Urinary Non-Struvite

- High quality of protein
- Low level of magnesium

URINARY NON-STRVITE VETERINARY DIET – for the proper functioning of the whole organism, it is necessary to efficiently get rid of unnecessary products of metabolism taking place with the participation of kidneys. Various unnecessary metabolites such as urea, creatinine, electrolytes, proteins and minerals are excreted from the body through urine.

Composition:

turkey 44% (meat 20%, liver, hearts, gizzards, skins), lamb 8% (meat 5%, lungs), minerals, salmon oil 1%, cranberries 1%, black currant 0.5%, lecithin, dried brewer's yeast 0.2% (containing prebiotics: mannan-oligosaccharides and β -glucans), dried chamomile 0.02%, milk thistle seed (*Silybum marianum*) 0.02%.

Analytical constituents: crude protein – 10%, crude fat – 5%, crude ash – 1.5%, crude fibre – 0.4%, moisture – 80%, sodium – 0.45%, potassium – 0.3%, calcium – 0.19%, phosphorus – 0.17%, chlorides – 0.8%, sulphur – 0.1%, magnesium – 0.01%.

Additives: nutritional additives/kg: Vitamin D₃ – 240 IU, Vitamin C – 1050 mg, Vitamin E – 95 mg, Zinc (zinc oxide; zinc chelate of glycine, hydrate) – 13 mg, Niacin – 6 mg, Vitamin B₁ (thiamine mononitrate) – 3.75 mg, Vitamin B₂ (riboflavin) – 1.9 mg, Vitamin B₆ – 1.9 mg, Manganese (manganous sulphate, monohydrate) – 0.5 mg, Iodine (calcium iodate, anhydrous) – 0.4 mg, Copper (copper (II) sulphate, pentahydrate) – 0.2 mg, Folic acid – 0.12 mg, Biotin – 0.09 mg, Vitamin B₁₂ – 0.012 mg, Taurine – 800 mg.

Urine acidifying substance/kg: DL-methionine – 2000 mg.

Metabolic energy in 100 g: 88 kcal.

Recommendations:

A consultation with a veterinarian is advisable before use or before extending the period of administration. The diet is recommended for 5 to 12 weeks to dissolve struvite stones and initially for up to 6 months to reduce their re-formation. The recommended daily dose is shown in the table on the packaging. Fresh drinking water should always be available.



A complete pet food diet for cats with diseases of the urinary tract. It supports the treatment of bladder inflammation and dissolving struvite crystals thanks to the lowered content of magnesium and protein as well as its urine acidifying properties. The diet may be a part of prophylactics after the ailment has subsided.



**pH CONTROL
FORMULA**



CRANBERRY



GRAIN FREE



**DRIED BREWER'S
YEAST**



SALMON OIL



**HIGH QUALITY
OF PROTEIN**

Advantages:

pH control formula – the formula is designed to lower the pH of the cat's urine. The acidifying effect on urine is possible due to the use of DL-methionine and cranberry in the feed in appropriate amounts, which limits the re-formation of struvite stones. Struvite stones, or phosphate-ammonium-magnesium, are formed in urine which has an alkaline pH.

Cranberry – hippuric acid contained in the fruit shows bacteriostatic activity, additionally the proanthocyanidin, binding with bacteria fimbriae, inactivates adhesins, thus preventing their adhesion to epithelial cells of the urinary tract. Cranberry effectively lowers the pH of urine, which results in smaller multiplication of bacteria in the urinary bladder and urinary tract. Thanks to these properties, it supports the treatment of infections and recurring chronic urinary tract infections in cats.

Grain free – the food is free of starchy and often allergenic grains, the source of carbohydrates has been replaced by easy to digest and healthier carbohydrate from potato starch.

Dried brewers' yeast (source of prebiotics: mannan-oligosaccharides and β -glucans) – has a beneficial impact on intestinal bacterial flora. Yeast has a high biological value and a high content of B group vitamins, deficiencies of which are responsible for the formation of oxalate-calcium crystals.

Salmon oil – polyunsaturated fatty acids from the omega-3 fatty acids present in fish oil inhibit the formation of inflammatory mediators and improve kidney function, especially in ageing cats.

High-quality of protein – pet food based on the sources of complete animal protein: turkey and lamb. The limited supply of high-quality protein covers the demand for essential amino acids, but at the same time does not cause their excessive catabolism and formation of products that could interfere with the function of the kidney.

DL-methionine – has urine-acidifying properties that limit the re-formation of struvite stones. Struvite, or ammonium magnesium phosphate, stones are formed in alkaline urine. Recommended for cats with recurrent lower urinary tract problems.



Weight Reduction

- Low fat content
- High quality of protein

WEIGHT REDUCTION VETERINARY DIET – recommended for cats prone to weight gain or overweight animals, supports weight loss, ensures the feeling of satiety.

Composition:

turkey 37% (meat 20%, gizzards, liver, hearts), rabbit 15% (meat 5%, lungs, liver, hearts), salmon oil 1%, blueberries 1%, carrot 0.5%, chicory inulin 0.3%, minerals, Plantago seed 0.24%, dried brewer's yeast 0.2% (containing prebiotics: mannan-oligosaccharides and β -glucans), dried thyme 0.02%, milk thistle seed (*Silybum marianum*) 0.02%, cinnamon.

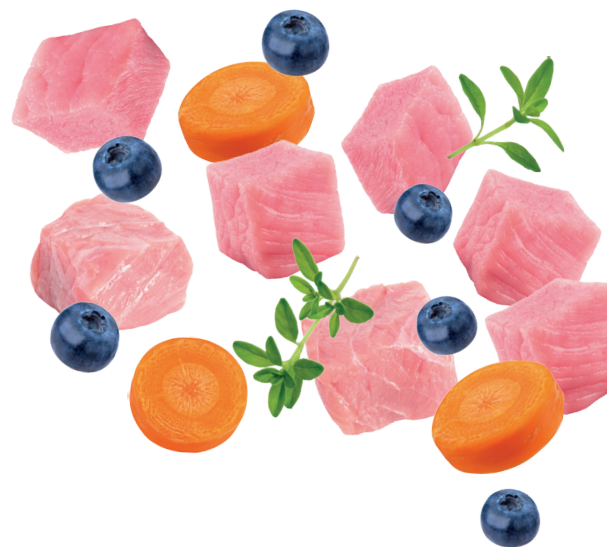
Analytical constituents: crude protein – 10%, crude fat – 3.5%, crude ash – 1.2%, crude fibre – 2.9%, moisture – 80%, calcium – 0.19%, phosphorus – 0.17%.

Additives: nutritional additives/kg: Vitamin D₃ – 240 IU, Vitamin C – 1050 mg, Vitamin E – 95 mg, Zinc (zinc oxide; zinc chelate of glycine, hydrate) – 13 mg, Niacin – 6 mg, Vitamin B₁ (thiamine mononitrate) – 3.75 mg, Vitamin B₂ (riboflavin) – 1.9 mg, Vitamin B₆ – 1.9 mg, Manganese (manganous sulphate, monohydrate) – 0.5 mg, Iodine (calcium iodate, anhydrous) – 0.4 mg, Copper (copper (II) sulphate, pentahydrate) – 0.2 mg, Folic acid – 0.12 mg, Biotin – 0.09 mg, Vitamin B₁₂ – 0.012 mg, Taurine – 800 mg, L-Carnitine – 800 mg, DL-methionine – 300 mg.

Metabolic energy in 100 g: 73 kcal.

Recommendations:

A consultation with a veterinarian is advisable before use. In order for the pet to lose weight, the portion size should be based on the estimated optimal body mass (target weight). In order to successfully reduce or maintain optimum body weight, it is important not to exceed the recommended daily energy intake. Use until reaching the target body mass. In the case of cats which are introduced to a diet, it is recommended to adhere to a transition period. The diet fully satisfies the nutritional requirements of cats during weight-loss therapy and leads to improvement in their state of health, aimed at preventing. Recommended daily portion is shown in the table on the packaging. Fresh drinking water should always be available.



A complete pet food diet recommended for overweight and obese cats as well as after sterilization in order to prevent the development of overweightness and obesity. Thanks to the low fat content and L-carnitine, the diet assists in the process of weight loss. The increased amount of fibre alleviates feeling of hunger.



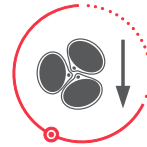
CHICORY
ROOT INULIN



L-CARNITINE



GRAIN FREE



LOW FAT CONTENT



HIGH CONTENT
OF DIETARY FIBRE



SALMON OIL

Advantages:

Chicory root inulin – is a rich source of inulin, which is a prebiotic i.e., a nutrient for the physiological intestinal bacterial flora. Normal intestinal flora makes it difficult the development of pathological bacteria in the animal's digestive tract.

L-carnitine – ensures targeted and facilitated transport of fatty acids to the mitochondria where they are metabolised, the resulting accelerated catabolism of energy contributes to increased lipolysis of adipose tissue.

Grain free – the food is free of stodgy and often allergenic grains, the source of carbohydrates has been replaced by easy to digest and healthier carbohydrate from potato starch.

Low fat content – the Weight Reduction Veterinary Diet is made up of highly nutritious, low-fat meats and animal products from turkey and rabbit.

Dietary fibre – the high content of dietary fibre ensures proper water absorption of the feed, which leads to increased filling of the digestive tract and increases the feeling of satiety. The presence of dietary fibre in the form of Plantago seeds influences the binding of fatty components in the content of the digestive tract, reducing their digestibility and utilisation as energy components.

Salmon oil – has a beneficial effect on lipid metabolism. In overweight cats, it helps to reduce blood cholesterol levels.

Cranberry – contains fibre, thanks to which it helps improve the motor activity of the intestines, creates conditions for the development of the normal microflora, and at the same time is low in calories.



Air dried diet Gastro Intestinal

- High quality of protein
- Easily digestible ingredients

GASTRO INTESTINAL VETERINARY DIET – in a case where symptoms of feed intolerance occur, digestive disorders, vomiting, diarrhoea from both small and large intestine. In these cases, it is important to introduce an easily digestible diet, which due to the content of easily digestible protein and fat with high coefficients of biological value ensures nourishment and regeneration of the organism.

Composition:

beef 55% (meat 20%, lungs, hearts, kidneys), turkey 15% (meat 10%, liver), beef fat, potato starch, eggs, carrots 2%, linseed oil 1.5%, minerals, banana 1%, sweet potatoes 1%, peas 1%, apple 1%, parsley leaves 1%, blueberries 1%, raspberries 1%, beetroot 1%, glutamine, salmon oil 0.6%, powder cellulose, chia seeds 0.5%, lecithins, turmeric 0.5%, dried brewer's yeast 0.4% (containing prebiotics: mannan-oligosaccharides 0.05% and β -glucans 0.05%), Plantago seed 0.3%, seaweed, fructooligosaccharides 0.2%, linseed 0.2%, dried catnip 0.1%, milk thistle seeds (*Silybum marianum*) 0.05%, dried oregano 0.03%, Mojave yucca, New Zealand green-lipped mussel.

Sources of highly digestible ingredients: beef, turkey, eggs, salmon oil, linseed oil.

Gastroprotective substances: Plantago seed, chia seeds, linseed.

Technological additives: natural antioxidants (tocopherols, rosemary extract).

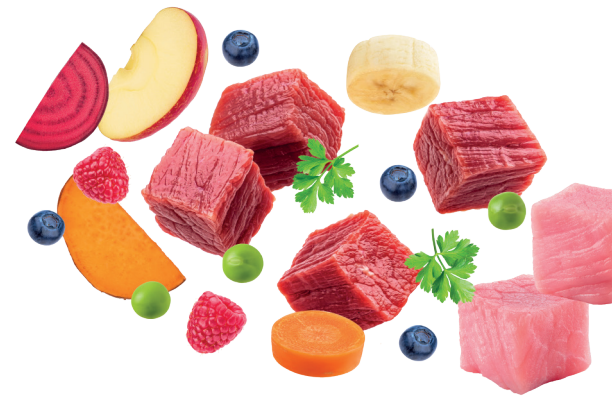
Analytical constituents: crude protein – 36%, crude fat – 19%, crude ash – 7%, crude fibre – 4%, moisture – 9%, calcium – 0.67%, phosphorus – 0.55%, sodium – 0.75%, potassium – 0.7%.

Additives: nutritional additives/kg: Vitamin D₃ – 450 IU, Vitamin C – 1500 mg, Niacin – 50 mg, Vitamin E – 40 mg, Zinc (zinc oxide) – 30 mg, Calcium D-pantothenate – 20 mg, Vitamin B₁ (thiamine mononitrate) – 12 mg, Vitamin B₂ (riboflavin) – 9 mg, Folic acid – 4 mg, Vitamin B₆ (pyridoxine hydrochloride) – 2.5 mg, Manganese (manganese (II) oxide) – 2 mg, Copper (copper (II) sulphate, pentahydrate) – 0.4 mg, Iodine (coated, granulated calcium iodate, anhydrous) – 0.3 mg, Biotin – 0.2 mg, Vitamin B₁₂ – 0.04 mg, Choline chloride – 1000 mg, Taurine – 1000 mg.

Metabolic energy in 100 g: 375 kcal.

Recommendations:

A consultation with a veterinarian is advisable before use. As soon as digestive and intestinal absorption disturbances are compensated, it should be applied for up to 12 weeks. However, in case of chronic pancreatic failure it must be administered for the entire life of a cat. During convalescence period, it is necessary to continue using until full recovery. The recommended daily dose is shown in the table on the packaging. Fresh drinking water should always be available.



A complete dietary, highly digestible dried food for dogs suffering from impaired digestion and intestinal absorption; it is also suitable for pets affected by gastric inflammation. It contains easily digestible ingredients and increased amounts of sodium and potassium which compensate for losses due to impaired digestion. Following consultation with a veterinarian, it can be administered in cases of chronic pancreatic failure. Owing to its high energy value, high concentration of essential nutrients and highly digestible ingredients, it is also recommended during periods of convalescence after illness.



LINSEED



CHIA SEEDS
AND PLANTAGO
SEED



DRIED BREWER'S
YEAST



TURMERIC



GRAIN FREE



GENTLY
AIR DRIED



NO RENDERED MEALS
NO PRESERVATIVES
NO COLOURANTS



BETA-GLUCANS
MOS & FOS

Linseed oil and salmon oil – the addition of these oils increases the pool of essential fatty acids, in the digestion of which the pancreas is less involved.

Chia seeds and Plantago seed – excellent for relieving digestive disorders, as they contain mucilage, dietary fibre (mainly pectin), facilitate the movement of faecal masses and prevent constipation. They also help regulate the number of symbiotic bacteria in the gastrointestinal tract, thereby strengthening the body's defences.

Dried brewer's yeast (source of prebiotics: mannano-oligosaccharides and β -glucans) – a beneficial effect on the intestinal bacterial flora. Yeast stimulates the response of immune cells located in the lymphoid tissue clusters of the gastrointestinal wall, making it more resistant to environmental factors.

Turmeric – its addition increases the synthesis of bile acids in the liver and their secretion with bile, which it has a beneficial effect on the efficiency of digestion and the absorption of fats from the gastrointestinal tract.

Grain free – the food is free of the hard-to-digest and often allergenic grain, which has been replaced by the more digestible and healthier carbohydrate derived from potato starch.

Gently air dried – a special process of drying at low temperatures allows as many nutrients as possible from the raw materials used for the production of the dried food to be preserved, while guaranteeing its microbiological safety. Thanks to an innovative technology, this dried food is a complete, highly nutritional, varied and at the same time convenient form of nutrition for dogs suffering from diseases, combining the crispness of dry food and the palatability of wet food.

No rendered meals, no preservatives, no colourants – without animal meals, colourants or preservatives; fresh meat, offal, fruit and vegetables are the raw material base for the production of this pet food, the same as for the production of wet food. The addition of fruits and vegetables and nutritional supplements allows you to diversify the diet of your pet and provide it with bioactive substances that help fight the disorders it suffers from. Putting the modern concept of dog nutrition into practice, no animal meals, colourants, preservatives (including glycerin), artificial flavours or flavour enhancers have been used in the production of this dried food.

Beta-glucans MOS & FOS – these are prebiotics, which are an ideal medium for the development of beneficial microbes that make up the gut microbiota, positively affecting the digestive system and the body's immunity. By increasing their volume, they stimulate the intestines to excrete unnecessary metabolic products. The source of mannanoligosaccharides (MOS) and β -glucans in the feed are dried brewer's yeast.

High quality of protein – feed based on raw materials of animal origin characterised by a high content of complete protein with a high limiting amino acid ratio and a very favourable fatty acid composition.



Air dried diet Urinary Non-Struvite

- High quality of protein
- Low level of magnesium

URINARY NON-STRVITE VETERINARY DIET – for the proper functioning of the whole organism, it is necessary to efficiently get rid of unnecessary products of metabolism taking place with the participation of kidneys. Various unnecessary metabolites such as urea, creatinine, electrolytes, proteins and minerals are excreted from the body through urine.

Composition:

beef 45% (meat 24%, lungs, hearts, kidneys), turkey 10% (meat 6%, liver), potato starch, beef fat, eggs, cranberry 3%, apple 3%, carrots 2%, peas 2%, salmon oil 2%, whey protein, powder cellulose, blueberries 1%, linseed, minerals, lecithins, chicory inulin (prebiotic) 0.5%, seaweed, dried brewer's yeast 0.4% (containing prebiotics: mannan-oligosaccharides 0.05% and β -glucans 0.05%), turmeric 0.3%, Plantago seed 0.3%, fructo-oligosaccharides 0.2%, black cumin oil 0.1%, glucosamine, chondroitin sulphate, Mojave yucca 0.02%, New Zealand green-lipped mussel.

Technological additives: natural antioxidants (tocopherols, rosemary extract).

Analytical constituents: crude protein – 26%, crude fat – 18%, crude ash – 5%, crude fibre – 5%, moisture – 9%, calcium – 0.5%, phosphorus – 0.35%, potassium – 0.58%, sodium – 0.73%, magnesium – 0.07%, chlorides – 0.8%, sulfur – 0.62%.

Additives: nutritional additives/kg: Vitamin D₃ – 450 IU, Vitamin C – 1000 mg, Vitamin E – 150 mg, Niacin – 50 mg, Zinc (zinc oxide) – 30 mg, Calcium D-pantothenate – 20 mg, Vitamin B₁ (thiamine mononitrate) – 12 mg, Vitamin B₂ (riboflavin) – 9 mg, Folic acid – 4 mg, Vitamin B₆ (pyridoxine hydrochloride) – 2.5 mg, Manganese (manganese (II) oxide) – 2 mg, Copper (copper (II) sulphate, pentahydrate) – 0.4 mg, Iodine (coated, granulated calcium iodate, anhydrous) – 0.3 mg, Biotin – 0.2 mg, Vitamin B₁₂ – 0.04 mg, Taurine – 1000 mg.

Urine acidifier/kg: DL-methionine – 5000 mg.

Metabolic energy in 100 g: 374 kcal.

Recommendations:

A consultation with a veterinarian is advisable before use or before extending the period of administration. The diet is recommended for 5 to 12 weeks to dissolve struvite stones and initially for up to 6 months to reduce their re-formation. The recommended daily dose is shown in the table on the packaging. Fresh drinking water should always be available.



A complete dried pet food diet for cats with diseases of the urinary tract. It supports the treatment of bladder inflammation and dissolving struvite crystals thanks to the lowered content of magnesium and protein as well as its urine acidifying properties. The diet may be a part of prophylactics after the ailment has subsided.



CRANBERRY



DL-METHIONINE



SALMON OIL
AND BLACK CUMIN
OIL



MOJAVE YUCCA



GRAIN FREE



GENTLY
AIR DRIED



NO RENDERED MEALS
NO PRESERVATIVES
NO COLOURANTS



BETA-GLUCANS
MOS & FOS

Advantages:

Cranberry – hippuric acid contained in the fruit shows bacteriostatic activity, additionally the proanthocyanidin, binding with bacteria fimbriae, inactivates adhesins, thus preventing their adhesion to epithelial cells of the urinary tract. Cranberry effectively lowers the pH of urine, which results in smaller multiplication of bacteria in the urinary bladder and urinary tract. Thanks to these properties, it supports the treatment of infections and recurring chronic urinary tract infections in cats.

DL-methionine – has urine-acidifying properties that limit the re-formation of struvite stones. Struvite, or ammonium magnesium phosphate, stones are formed in alkaline urine. Recommended for cats with recurrent lower urinary tract problems.

Salmon oil and black cumin oil – polyunsaturated fatty acids from the omega-3 fatty acids present in fish oil inhibit the formation of inflammatory mediators and improve kidney function, especially in ageing cats.

Mojave yucca – stimulate the digestive function and absorption of nutrients from the digestive tract and stimulate peristalsis.

Grain free – the food is free of the hard-to-digest and often allergenic grain, which has been replaced by the more digestible and healthier carbohydrate derived from potato starch.

Gently air dried – a special process of drying at low temperatures allows as many nutrients as possible from the raw materials used for the production of the dried food to be preserved, while guaranteeing its microbiological safety. Thanks to an innovative technology, this dried food is a complete, highly nutritional, varied and at the same time convenient form of nutrition for dogs suffering from diseases, combining the crispness of dry food and the palatability of wet food.

No rendered meals, no preservatives, no colourants – without animal meals, colourants or preservatives; fresh meat, offal, fruit and vegetables are the raw material base for the production of this pet food, the same as for the production of wet food. The addition of fruits and vegetables and nutritional supplements allows you to diversify the diet of your pet and provide it with bioactive substances that help fight the disorders it suffers from. Putting the modern concept of dog nutrition into practice, no animal meals, colourants, preservatives (including glycerin), artificial flavours or flavour enhancers have been used in the production of this dried food.

Beta-glucans MOS & FOS – these are prebiotics, which are an ideal medium for the development of beneficial microbes that make up the gut microbiota, positively affecting the digestive system and the body's immunity. By increasing their volume, they stimulate the intestines to excrete unnecessary metabolic products. The source of mannanoligosaccharides (MOS) and β -glucans in the feed are dried brewer's yeast.

High-quality protein – pet food based on the sources of complete animal protein: turkey and lamb. The limited supply of high-quality protein covers the demand for essential amino acids, but at the same time does not cause their excessive catabolism and formation of products that could interfere with the function of the kidney.

Dried brewers' yeast (source of prebiotics: mannan-oligosaccharides and β -glucans) – has a beneficial impact on intestinal bacterial flora. Yeast has a high biological value and a high content of B group vitamins, deficiencies of which are responsible for the formation of oxalate-calcium crystals.



Air dried diet Weight Reduction

- Low fat content
- High quality of protein

WEIGHT REDUCTION VETERINARY DIET – recommended for cats prone to weight gain or overweight animals, supports weight loss, ensures the feeling of satiety.

Composition:

beef 50% (meat 24%, lungs, hearts, kidneys), turkey 15% (meat 6%, liver), potato starch, whey protein, apple 2%, carrots 2%, eggs, powder cellulose, minerals, blueberries 1%, cranberry 1%, raspberries 1%, spinach 1%, beetroot 1%, parsley root, beef fat, linseed oil 0.5%, salmon oil 0.5%, turmeric 0.5%, lecithins, dried brewer's yeast 0.4% (containing prebiotics: mannan-oligosaccharides 0.05% and β -glucans 0.05%), chicory inulin (prebiotic) 0.2%, hemp seed, fructo-oligosaccharides 0.1%, black cumin oil 0.1%, seaweed, glucosamine, chondroitin sulphate, Mojave yucca, New Zealand green-lipped mussel, milk thistle seeds (*Silybum marianum*) 0.02%.

Technological additives: natural antioxidants (tocopherols, rosemary extract).

Analytical constituents: crude protein – 40%, crude fat – 10%, crude ash – 7%, crude fibre – 5%, moisture – 9%, calcium – 0.6%, phosphorus – 0.5%.

Additives: nutritional additives/kg: Vitamin D₃ – 450 IU, Vitamin C – 1000 mg, Vitamin E – 150 mg, Niacin – 50 mg, Zinc (zinc oxide) – 30 mg, Calcium D-pantothenate – 20 mg, Vitamin B₁ (thiamine mononitrate) – 12 mg, Vitamin B₂ (riboflavin) – 9 mg, Folic acid – 4 mg, Vitamin B₆ (pyridoxine hydrochloride) – 2.5 mg, Manganese (manganese (II) oxide) – 2 mg, Copper (copper (II) sulphate, pentahydrate) – 0.4 mg, Iodine (coated, granulated calcium iodate, anhydrous) – 0.3 mg, Biotin – 0.2 mg, Vitamin B₁₂ – 0.04 mg, L-carnitine – 1500 mg, Choline chloride – 1000 mg, Taurine – 1000 mg.

Metabolic energy in 100 g: 327 kcal.

Recommendations:

A consultation with a veterinarian is advisable before use. In order for the pet to lose weight, the portion size should be based on the estimated optimal body mass (target weight). In order to successfully reduce or maintain optimum body weight, it is important not to exceed the recommended daily energy intake. Use until reaching the target body mass. In the case of cats which are introduced to a diet, it is recommended to adhere to a transition period. The diet fully satisfies the nutritional requirements of cats during weight-loss therapy and leads to improvement in their state of health, aimed at preventing. The recommended daily portion is shown in the table on the packaging. Fresh drinking water should always be available.



A complete dried pet food diet recommended for overweight and obese cats as well as after sterilization in order to prevent the development of overweightness and obesity. Thanks to the low fat content and L-carnitine, the diet assists in the process of weight loss. The increased amount of fibre alleviates feelings of hunger.



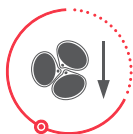
CHICORY INULIN



L-CARNITINE



DIETARY FIBRE



LOW FAT



GRAIN FREE



GENTLY
AIR DRIED



NO RENDERED MEALS
NO PRESERVATIVES
NO COLOURANTS



BETA-GLUCANS
MOS & FOS

Chicory inulin – a prebiotic, i.e. a nutrient for the physiological intestinal flora. The correct intestinal flora hinders the growth of pathological bacteria in the animals' digestive tract and, therefore, prevents gastrointestinal diseases.

L-carnitine – provides targeted and facilitated transport of fatty acids to the mitochondria, where metabolised; the resulting accelerated catabolism of energy contributes to increased lipolysis of adipose tissue.

Dietary fibre – the high content of dietary fibre (derived from fruit and vegetables and cellulose) ensures adequate water absorption in the food, which increases the feeling of satiety and fills the gastrointestinal tract, resulting in the faster stimulation of the satiety centres and the reduced feeling of hunger.

Low fat – the low fat content and presence of fatty acids derived from raw materials of animal origin ensures the maximum involvement of liver and pancreas functions and prolongs the time required for digestion. In addition, polyunsaturated fatty acids of the omega-3 and omega-6 family present in salmon oil and black cumin oil in the right proportions condition the biochemical control of inflammatory processes.

Grain free – the food is free of the hard-to-digest and often allergenic grain, which has been replaced by the more digestible and healthier carbohydrate derived from potato starch.

Gently air dried – a special process of drying at low temperatures allows as many nutrients as possible from the raw materials used for the production of the dried food to be preserved, while guaranteeing its microbiological safety. Thanks to an innovative technology, this dried food is a complete, highly nutritional, varied and at the same time convenient form of nutrition for dogs suffering from diseases, combining the crispness of dry food and the palatability of wet food.

No rendered meals, no preservatives, no colourants – without animal meals, colourants or preservatives; fresh meat, offal, fruit and vegetables are the raw material base for the production of this pet food, the same as for the production of wet food. The addition of fruits and vegetables and nutritional supplements allows you to diversify the diet of your pet and provide it with bioactive substances that help fight the disorders it suffers from. Putting the modern concept of dog nutrition into practice, no animal meals, colourants, preservatives (including glycerin), artificial flavours or flavour enhancers have been used in the production of this dried food.

Beta-glucans MOS & FOS – these are prebiotics, which are an ideal medium for the development of beneficial microbes that make up the gut microbiota, positively affecting the digestive system and the body's immunity. By increasing their volume, they stimulate the intestines to excrete unnecessary metabolic products. The source of mannanooligosaccharides (MOS) and β -glucans in the feed are dried brewer's yeast.

High quality of protein – feed based on raw materials of animal origin characterised by a high content of complete protein with a high limiting amino acid ratio and a very favourable fatty acid composition.



Sterilised with rabbit

4Vets Natural pet food with rabbit is a complete, maintenance product which covers 100% of the daily demand for all nutrients and minerals of adult sterilised cats of all breeds. This is pet food for cats in the period of convalescence, after surgery procedures and suffering from a lack of appetite. Thanks to its precisely developed composition, it ensures correct bone and teeth mineralisation and proper metabolic processes in adult cats after a sterilisation. The main raw materials, meat and products of animal origin, including beef, which is a source of high-quality protein and fat. The product contains added taurine, an ingredient which plays a key role in the diet of cats and has antioxidant and anti-ageing properties. This pet food has been prepared by animal nutritionists and contains no added cereals, preservatives or colouring agents.

Composition:

beef 30% (hearts, lungs, liver), pork 20% (lungs, meat, kidneys), rabbit 10% (liver, meat), pea starch, minerals, fructo-oligosaccharides.

Analytical constituents:

crude protein – 10%, crude fat – 3.5%, crude ash – 1.5%, crude fibre – 1.8%, moisture – 82%, calcium – 0.2%, phosphorus – 0.18%.

Additives: nutritional additives/kg:

Vitamin D₃ – 240 IU, Vitamin E – 95 mg, Vitamin C – 50 mg, Zinc (zinc chelate of glycine, hydrate, zinc oxide) – 13 mg, Manganese (manganous sulphate, monohydrate) – 0.5 mg, Iodine (calcium iodate, anhydrous) – 0.4 mg, Copper (copper (II) sulphate, pentahydrate) – 0.2 mg, Taurine – 800 mg, L-carnitine – 800 mg.

Urinary acidifier/kg:

DL-methionine – 4000 mg.

Recommendations:

Pet food should be served at room temperature in at least two meals a day. Diet changes should be made gradually for approximately five days. Fresh drinking water should always be available.



With tuna

4Vets Natural pet food with tuna is a delicious meat meal that provides your cat with essential ingredients and vitamins and meets the nutrient demands of adult cats of all breeds. It contains a high proportion of meat and animal products as well as fish and fish derivatives, including the real delicacy - tuna! Pet food has been developed to meet the specific needs of cats which have undergone a sterilisation procedure and therefore have an increased tendency to gain weight. The fat content has been reduced and the addition of taurine, which plays a key role in the diet of cats and has an antioxidant and anti-ageing effect. The product has been prepared by animal nutritionists and does not contain added grains, preservatives or colouring agents. This makes it exceptionally appetising.

Composition:

beef 30% (liver, hearts, lungs), pork 25% (lungs, meat, kidneys), tuna 10% (whole), minerals.

Analytical constituents:

crude protein – 11%, crude fat – 5%, crude ash – 1.5%, crude fibre – 0.5%, moisture – 80%, calcium – 0.3%, phosphorus – 0.25%.

Additives: nutritional additives/kg:

Vitamin D₃ – 240 IU, Vitamin E – 95 mg, Vitamin C – 50 mg, Zinc (zinc chelate of glycylglycyl-L-histidine, zinc oxide) – 13 mg, Manganese (manganous sulphate, monohydrate) – 0.5 mg, Iodine (calcium iodate, anhydrous) – 0.4 mg, Copper (copper (II) sulphate, pentahydrate) – 0.2 mg, Taurine – 800 mg.

Recommendations:

Pet food should be served at room temperature in at least two meals a day. Diet changes should be made gradually for approximately five days. Fresh drinking water should always be available.



With turkey

4Vets Natural pet food with turkey that contains a large amount of meat and animal derivatives is an excellent source of easily digestible protein and a natural source of micro and macro elements, and vitamins. The product contains taurine, which is essential for the maintenance of well-being of adult cats of all breeds. The product has been prepared by animal nutritionists and does not contain any added cereals, preservatives or colouring agents. Due to this, it exceptionally tasteful.

Composition:

beef 30% (hearts, lungs, liver), pork 25% (lungs, meat, kidneys), turkey 10% (meat, liver), minerals.

Analytical constituents:

crude protein – 11%, crude fat – 5%, crude ash – 1.5%, crude fibre – 0.5%, moisture – 80%, calcium – 0.3%, phosphorus – 0.25%.

Additives: nutritional additives/kg:

Vitamin D₃ – 240 IU, Vitamin E – 95 mg, Vitamin C – 50 mg, Zinc, (zinc chelate of glycine, hydrate, zinc oxide) – 13 mg, Manganese (manganous sulphate, monohydrate) – 0,5 mg, Iodine (calcium iodate, anhydrous) – 0,4 mg, Copper (copper (II) sulphate, pentahydrate) – 0,2 mg, Taurine – 800 mg.

Recommendations:

Pet food should be served at room temperature in at least two meals a day. Diet changes should be made gradually for approximately five days. Fresh drinking water should always be available.



With veal

4Vets Natural pet food with veal is a meal that supports the maintenance of optimal body weight and well-being of adult cats of all breeds. With 65% of veal and animal products, it is a natural source of micro and macro elements, vitamins, fatty acids and amino acids as well as taurine, which is an essential ingredient in cat nutrition and plays a key role in their diet, and has antioxidant and anti-ageing properties. 4 Vets Natural is based on the natural nutritional needs of cats, fully covers the demand for ingredients necessary for the proper functioning of the body. In addition, properly developed formula ensures that the cat eats easy-to-digest and high-quality protein, which is the main source of energy.

Composition:

beef 30% (hearts, lungs, liver), pork 25% (lungs, meat, kidneys), veal 10% (meat, liver), minerals.

Analytical constituents:

crude protein – 11%, crude fat – 5%, crude ash – 1.5%, crude fibre – 0.5%, moisture – 80%, calcium – 0.3%, phosphorus – 0.25%.

Additives: nutritional additives/kg:

Vitamin D₃ – 240 IU, Vitamin E – 95 mg, Vitamin C – 50 mg, Zinc (zinc chelate of glicyne, hydrate, zinc oxide) – 13 mg, Manganese (manganous sulphate, monohydrate) – 0.5 mg, Iodine (calcium iodate, anhydrous) – 0.4 mg, Copper (copper (II) sulphate, pentahydrate) – 0.2 mg, Taurine – 800 mg.

Recommendations:

Pet food should be served at room temperature in at least two meals a day. Diet changes should be made gradually for approximately five days. Fresh drinking water should always be available.



Logistic

Type of packaging	Can		Bag
Weight	4Vets Natural 185 g	4Vets Natural 400 g	4Vets Natural 1 kg
Type of collective packaging	Pack		Cardboard
Number of packs on a pallet	300	150	42
Number of pieces in collective packaging	6	6	8
Number of collective packaging on a layer (pcs.)	25	25	6
Number of layers on a pallet (pcs.)	12	6	7
Number of pieces on a pallet	1800	900	336
Net weight of a pallet (kg)	333	360	336
Gross weight of a pallet (kg) ≈	435	435	385





VETERINARY
+ **EXCLUSIVE**

4vets
NATURAL

 www.4vetsnatural.com
 info@4vetsnatural.com
 +48 727 631 757



Swiss Valley Sp. z o.o.
ul. Krzywa 35, 64-920 Piła
www.swissvalley.pl



www.4vetsnatural.com